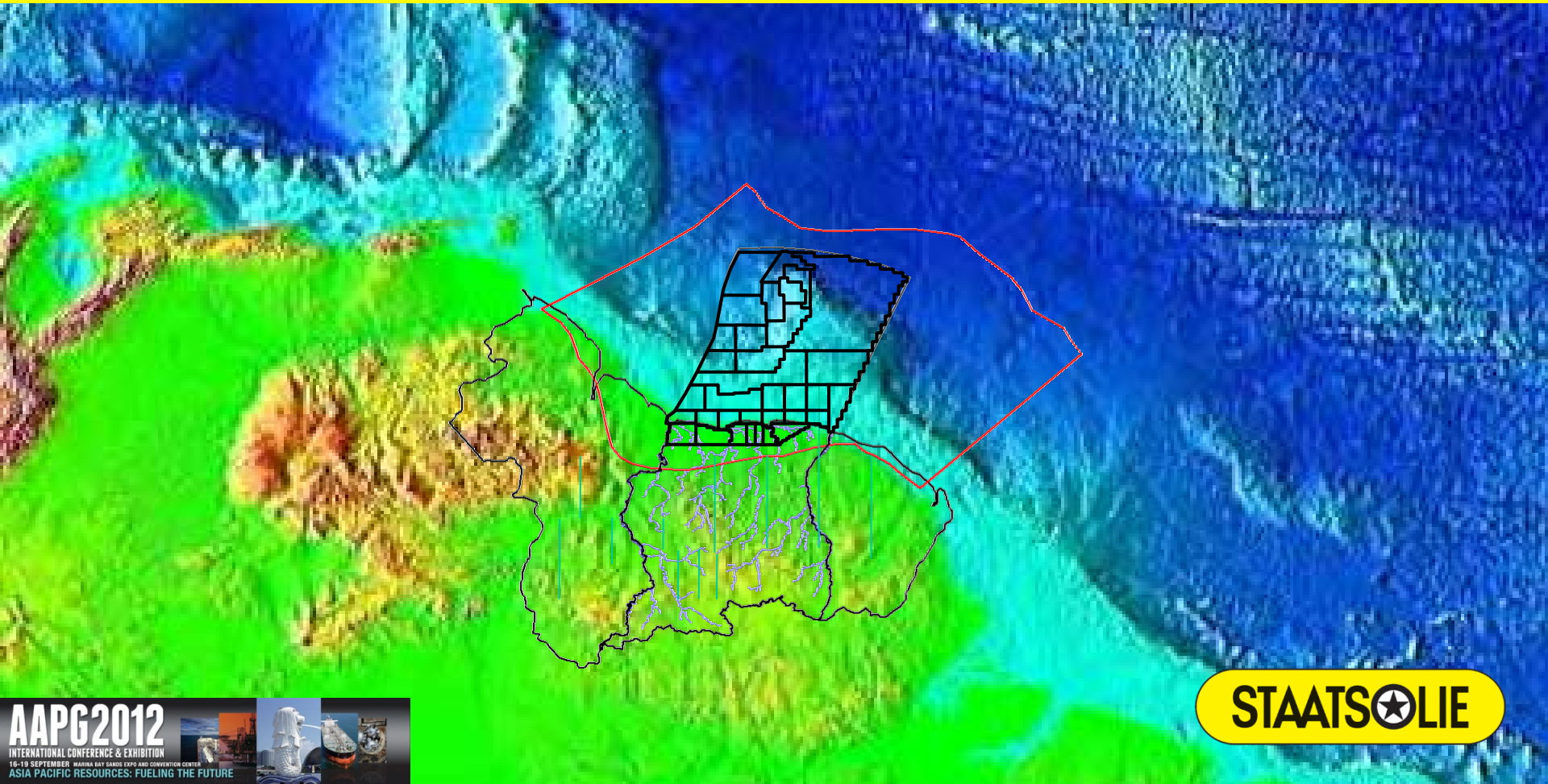


The Suriname-Guyana Basin: The Next Giant

Suriname 2013 International Bidding Round



Suriname



About Us

- Humid tropical climate
- Paramaribo on UNESCO World Heritage (2002)
- 531,000 people, ethnically diverse
- Life Expectancy 71 years
- Language Dutch, but English widely spoken
- Celebrate Holidays like Christmas, Divali, Eid-ul-Fitr



Economy



- World's 17th richest country (natural resources)
- GDP per capita (US\$) 7,381 (2011 IMF est.)
- Real GDP growth (09-12) 3.5%-4.9% (IMF)
- Adult literacy 90%
- CO2 emissions 4.7348 mtpc (World Bank 2008)
- Country rating BB- (S&P)



History

Founded in 1980

Shareholder: Republic of Suriname

Functions

Commercial Entity:

Independent, vertically integrated Oil Company

Regulator:

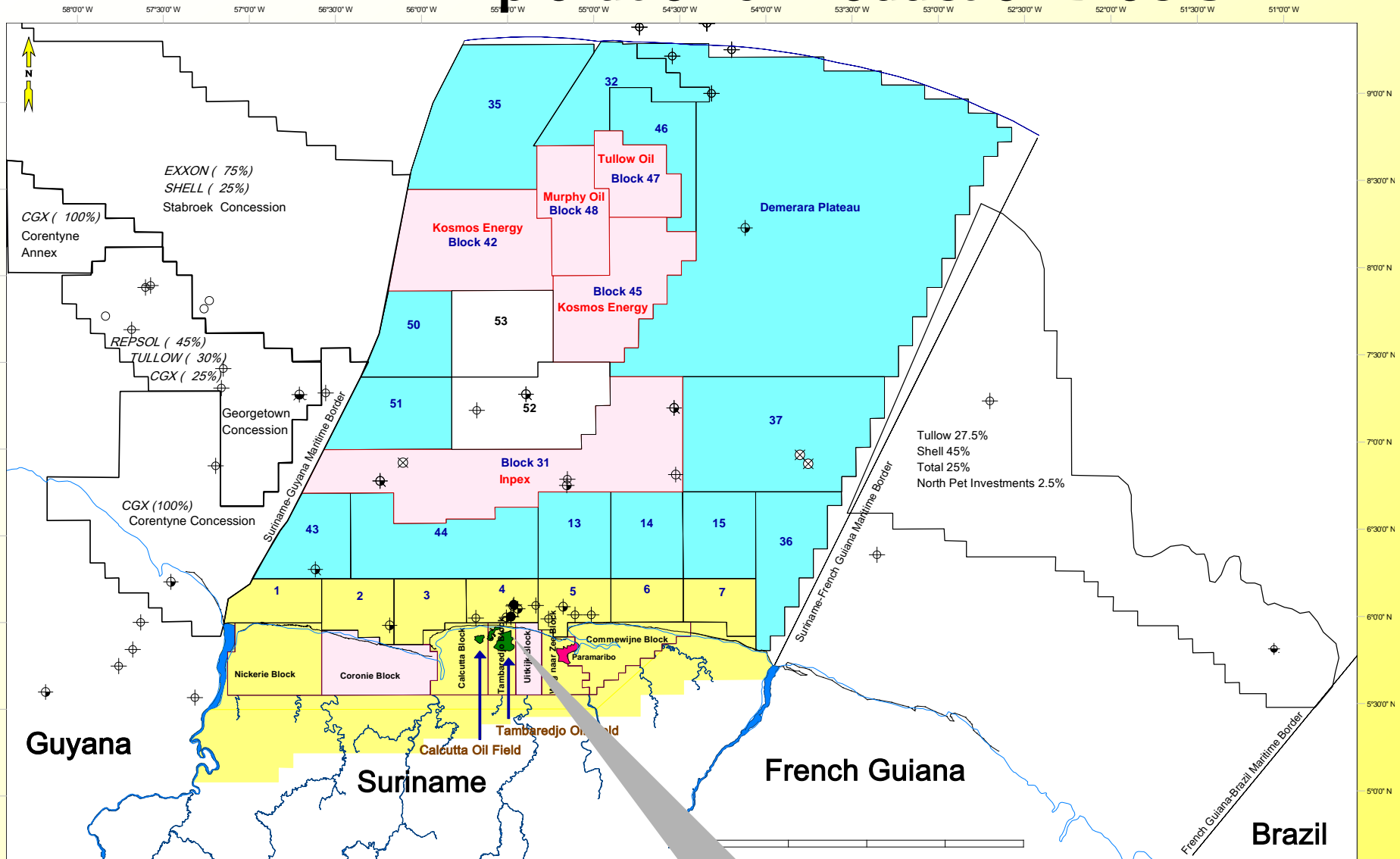
Policy, promotion, contracting and supervision of petroleum activities

Core Activities

Exploration	180,000km ²
Crude production	16,000 bopd
Refining	7,200 bpsd
Marketing (bunkering)	720,000 bbls/year
Thermal Power Generation	28MW



Exploration & Production Blocks



July 2012

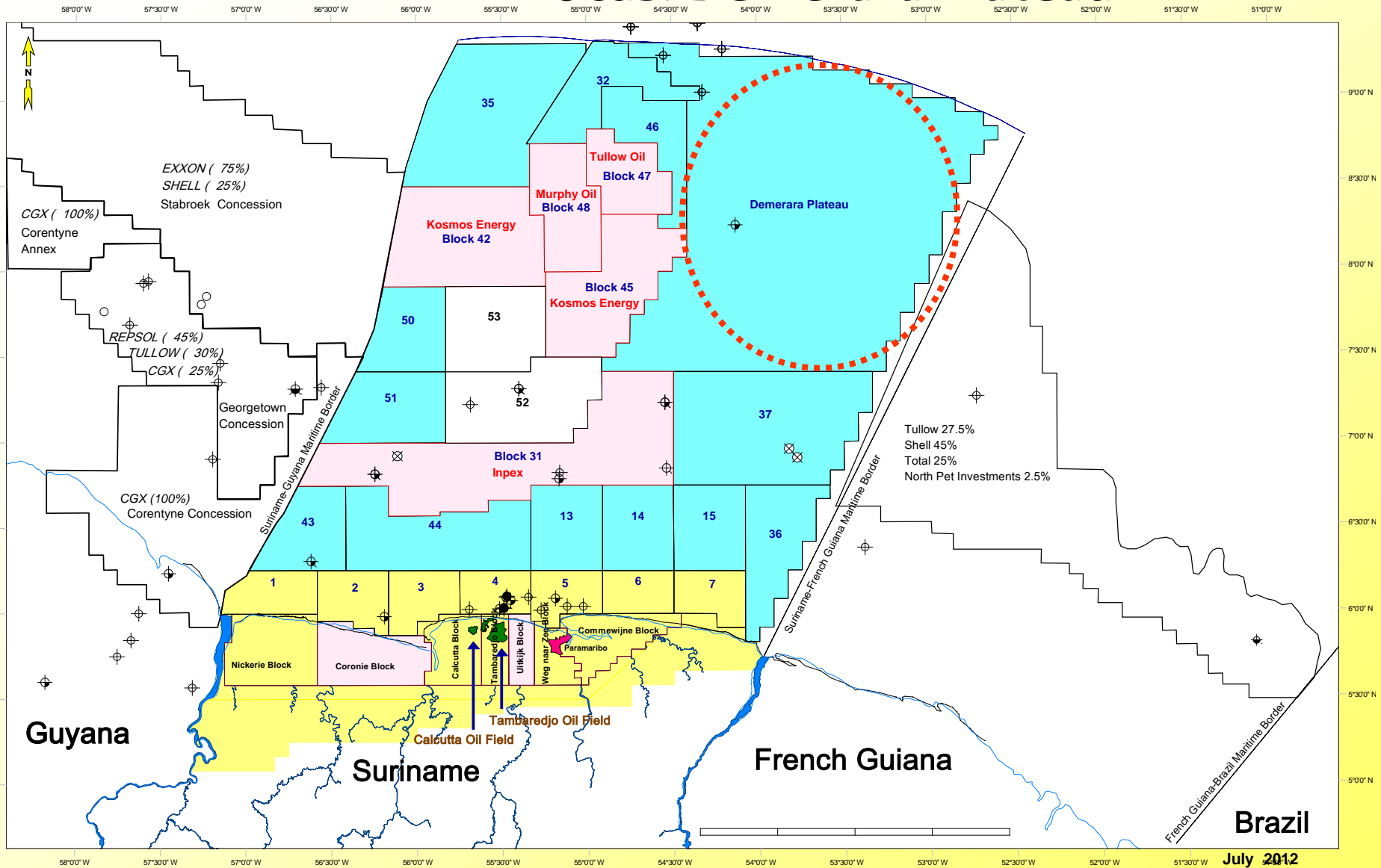


Onshore oil Fields
 STOIP 700 million barrels.
 Production 16,000 BOPD

Legend:

- Blocks under contract
- Open Blocks
- Staatsolie Operated Blocks
- Staatsolie Oil fields

Focus: Demerara Plateau



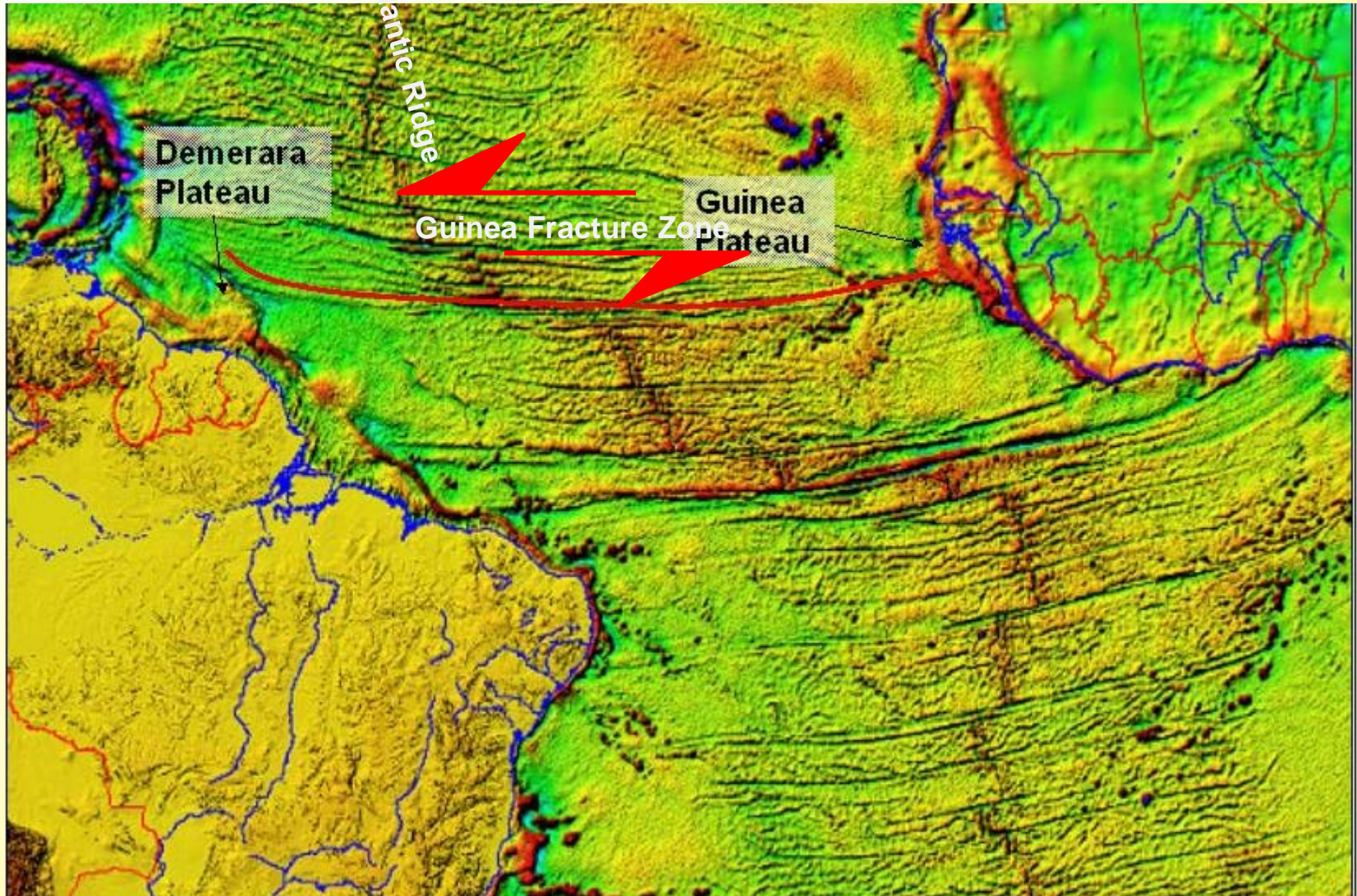
July 2012

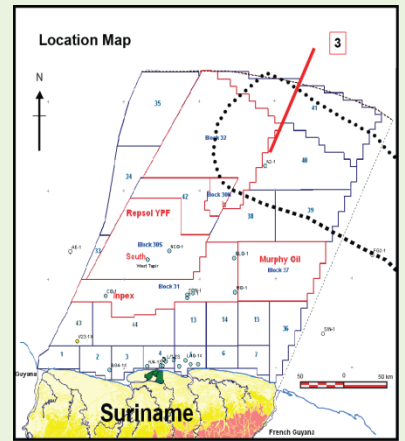
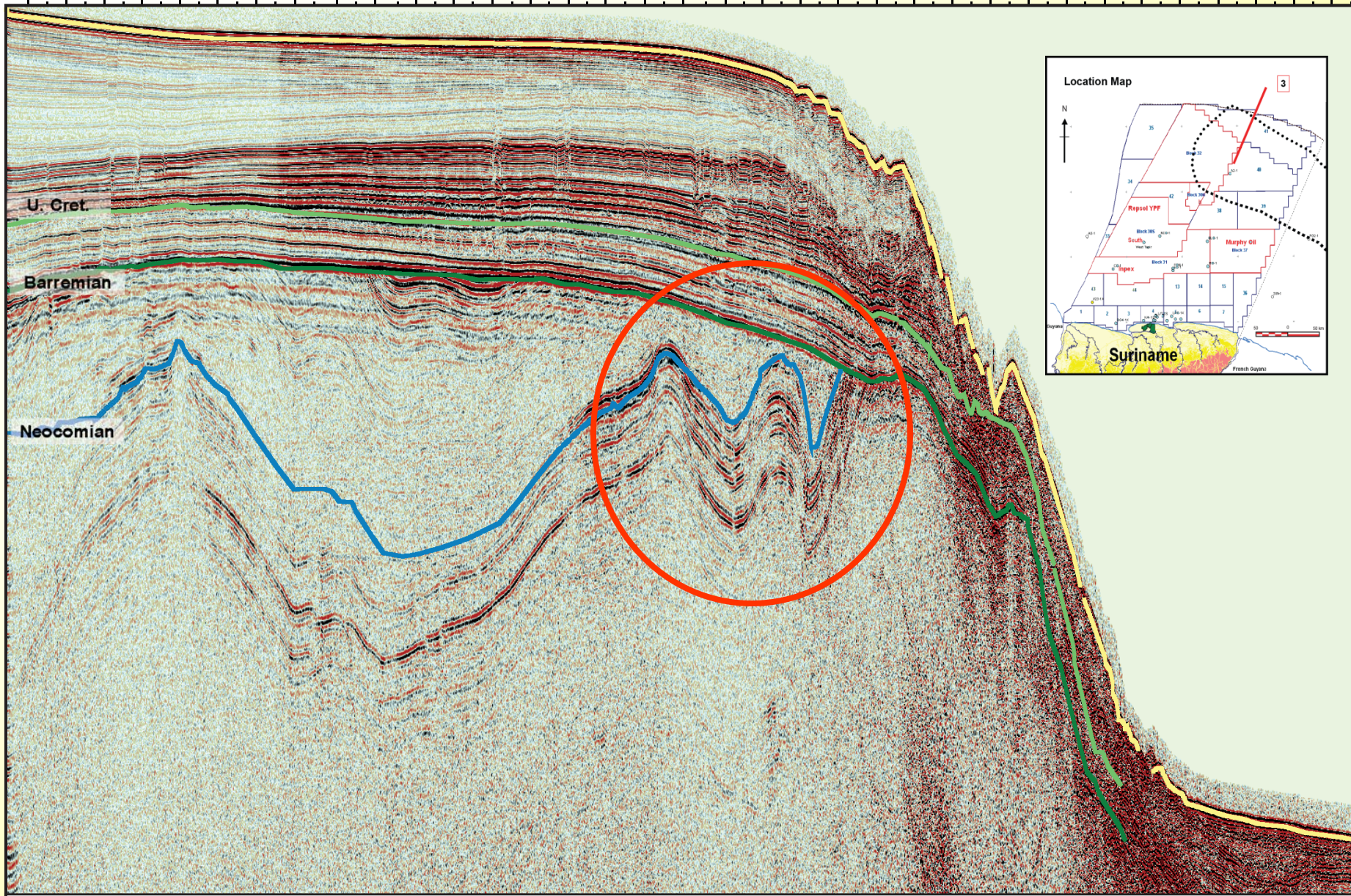
Legend:

- Blocks under contract
- Open Blocks
- Staatsolie Operated Blocks
- Staatsolie Oil fields

Guinea Plateau and Demerara Plateau

Jubilee-play across the Atlantic ??





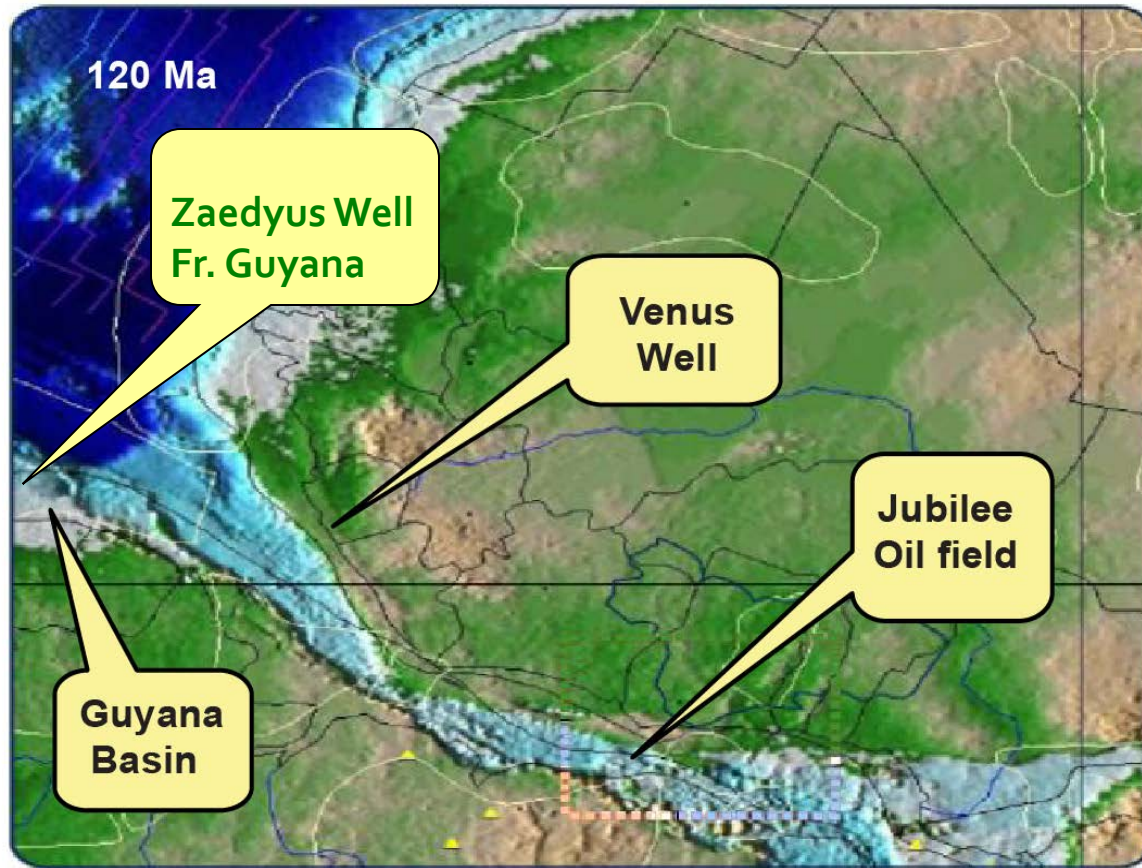
S

REGIONAL CROSS-SECTION OVER DEMERARA PLATEAU

N

3

Equatorial Atlantic Play Fairway

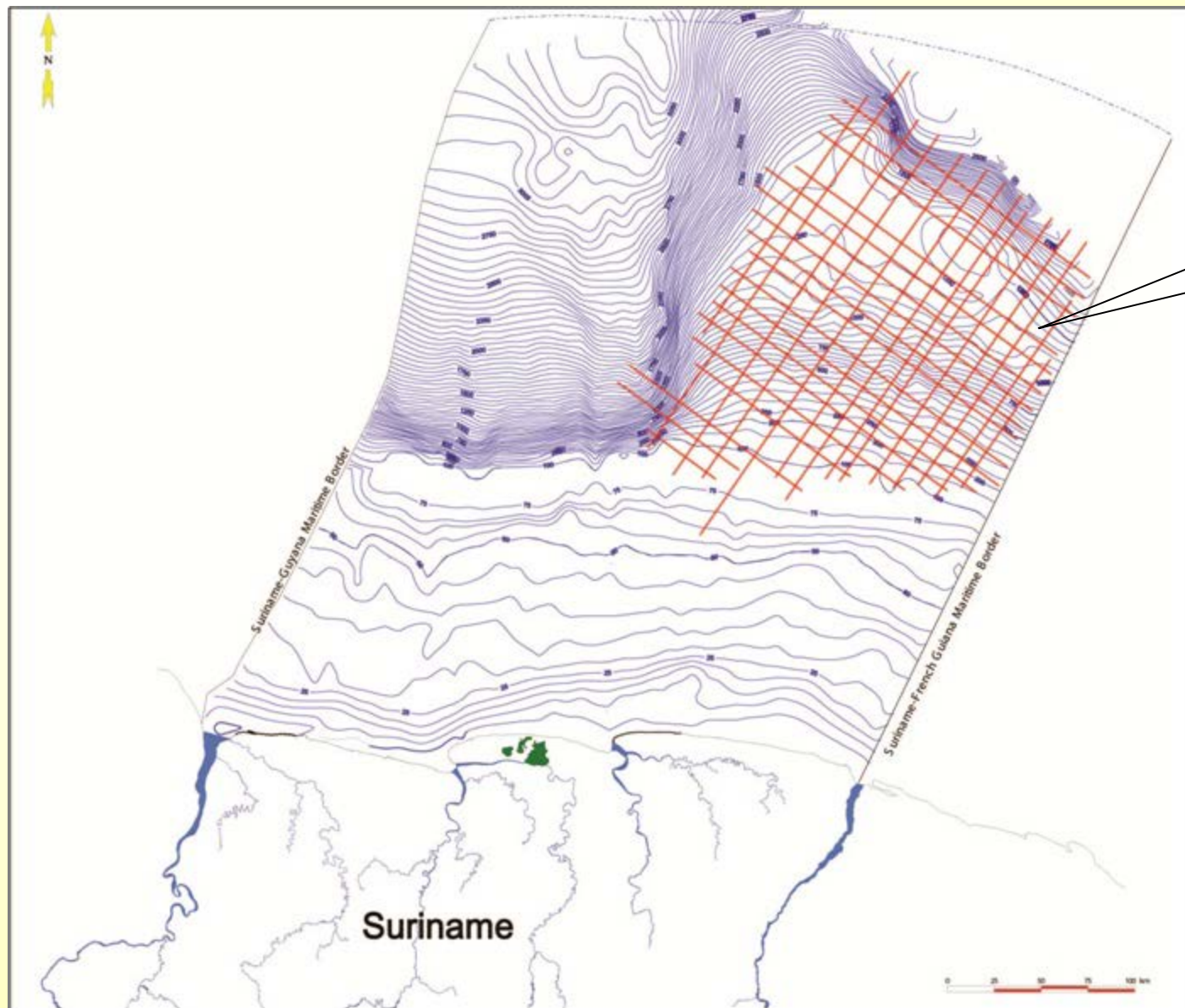


EARLY CRETACEOUS RECONSTRUCTION OF NORTH-WESTERN AFRICA AND SOUTH AMERICA. AFTER TULLOW, 2008.

- Jubilee Field offshore Ghana
- Venus well offshore Sierra Leone

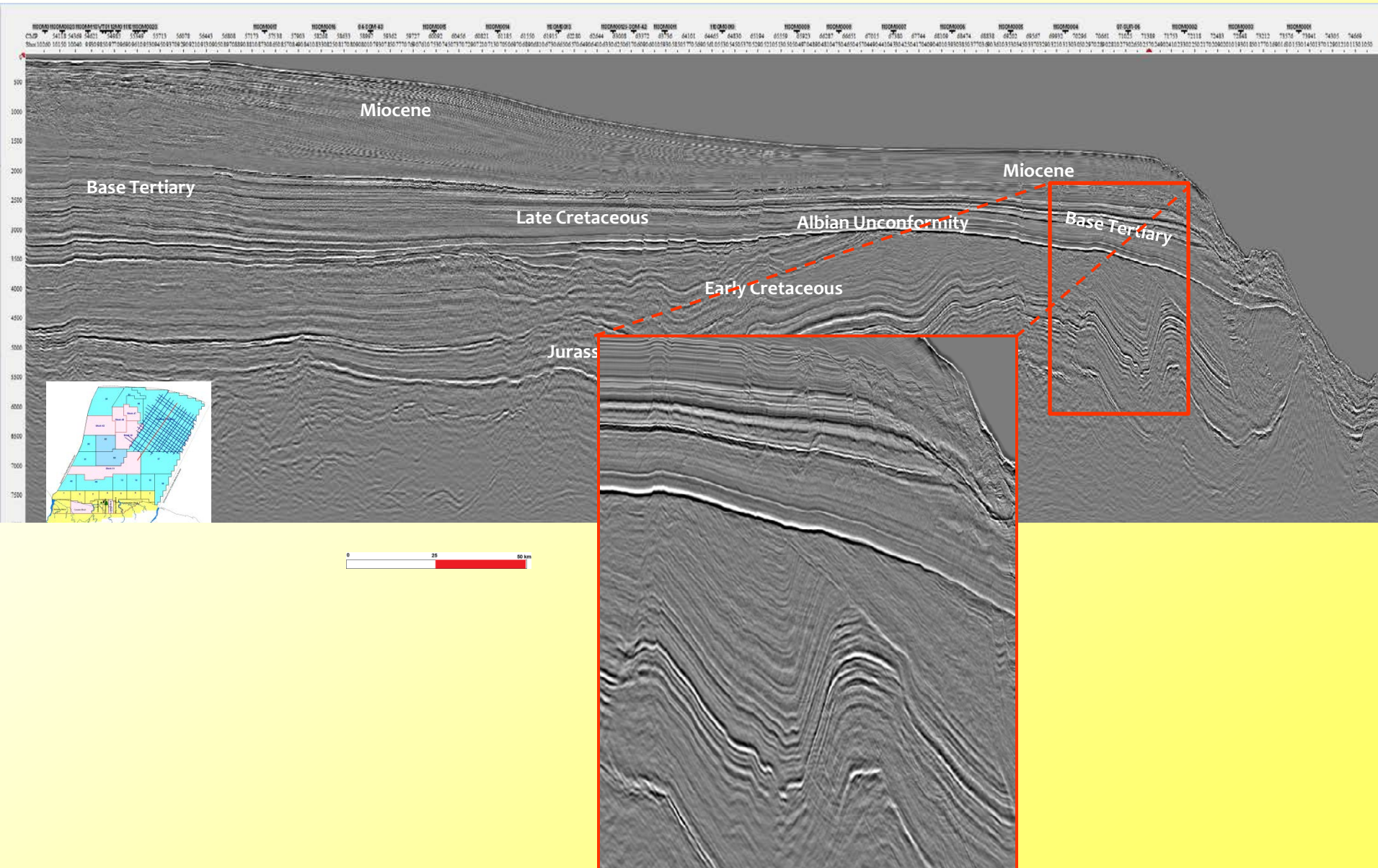
Acquisition: December 2011

Available: Q4 2012

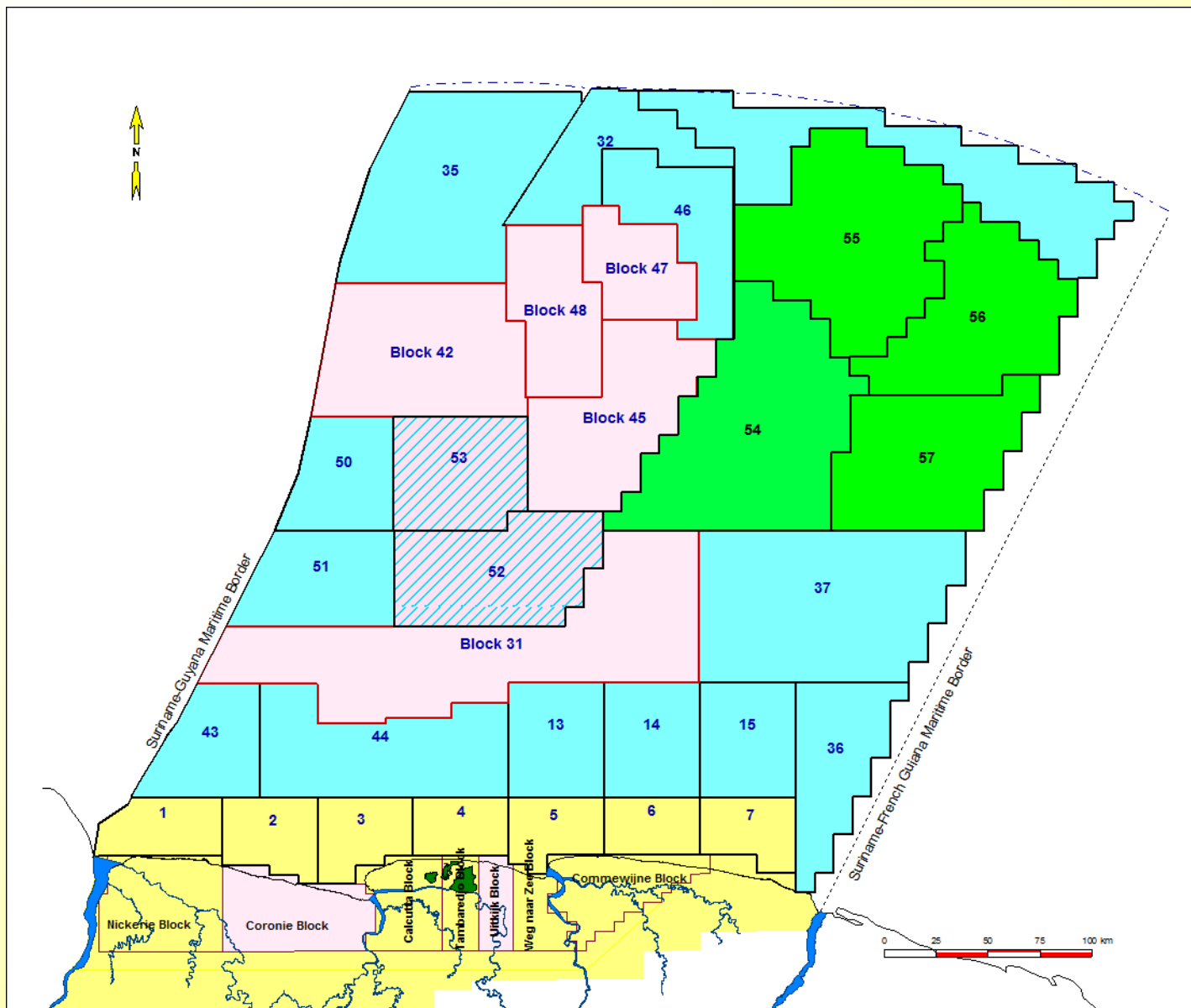


5,000km
2D BroadSeis[®]

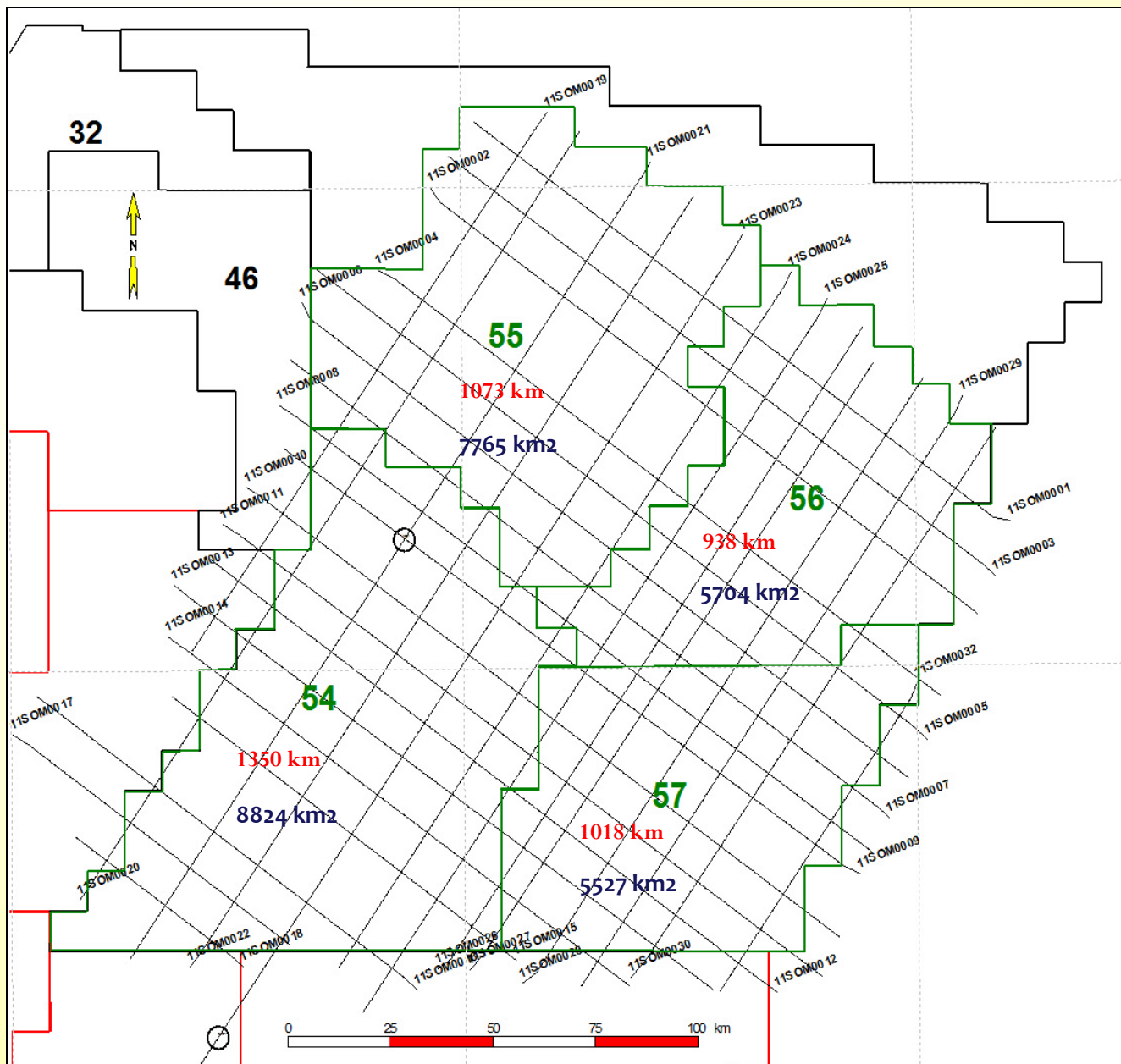
Line Example



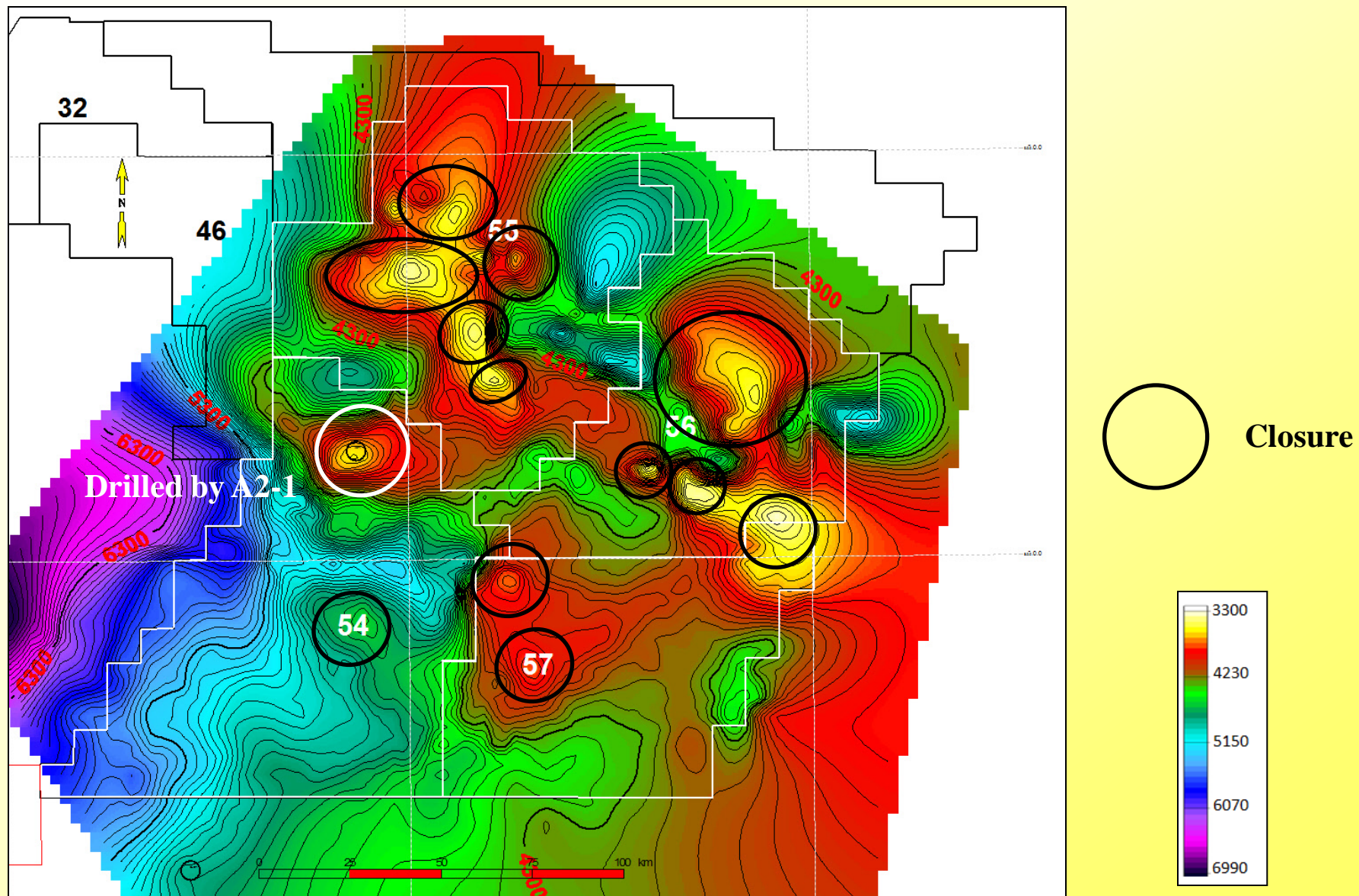
Bidding Round 2013 Offshore Block Map



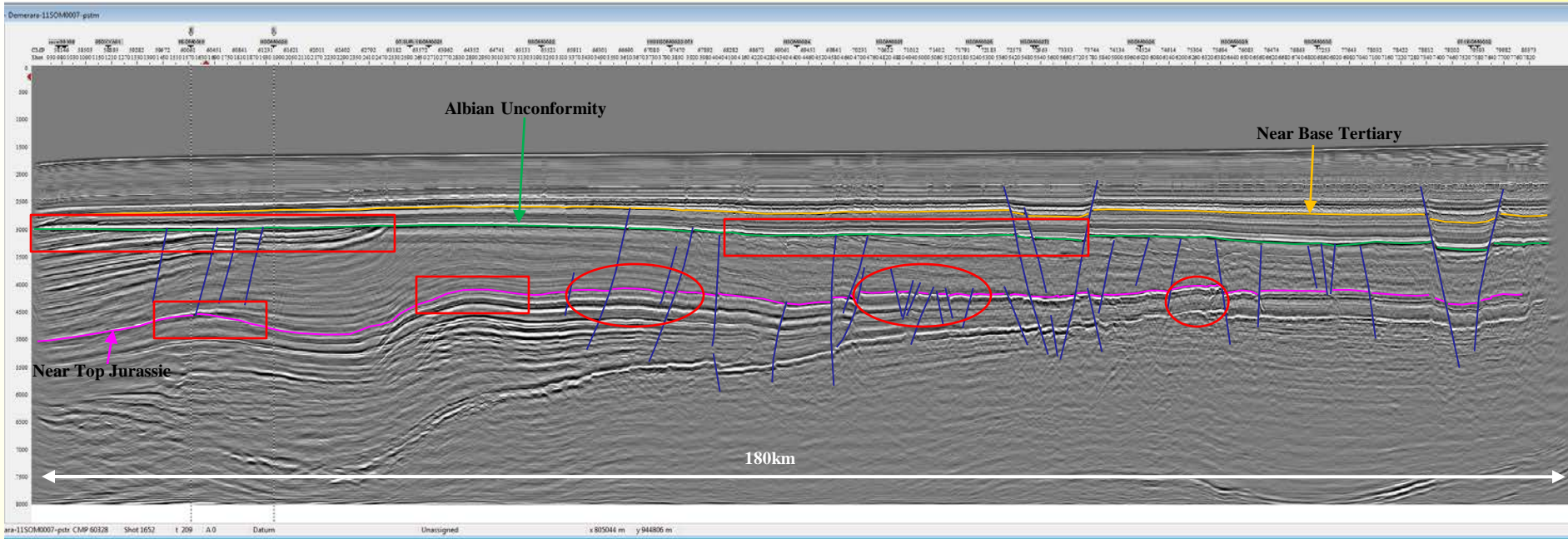
Block Size & Seismic Data



Top Jurassic Isochrone Map (TWT)



Plays Demerara High

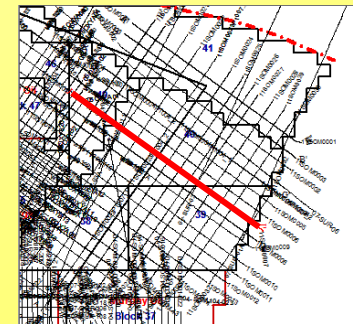


Truncations below Albian unconformity

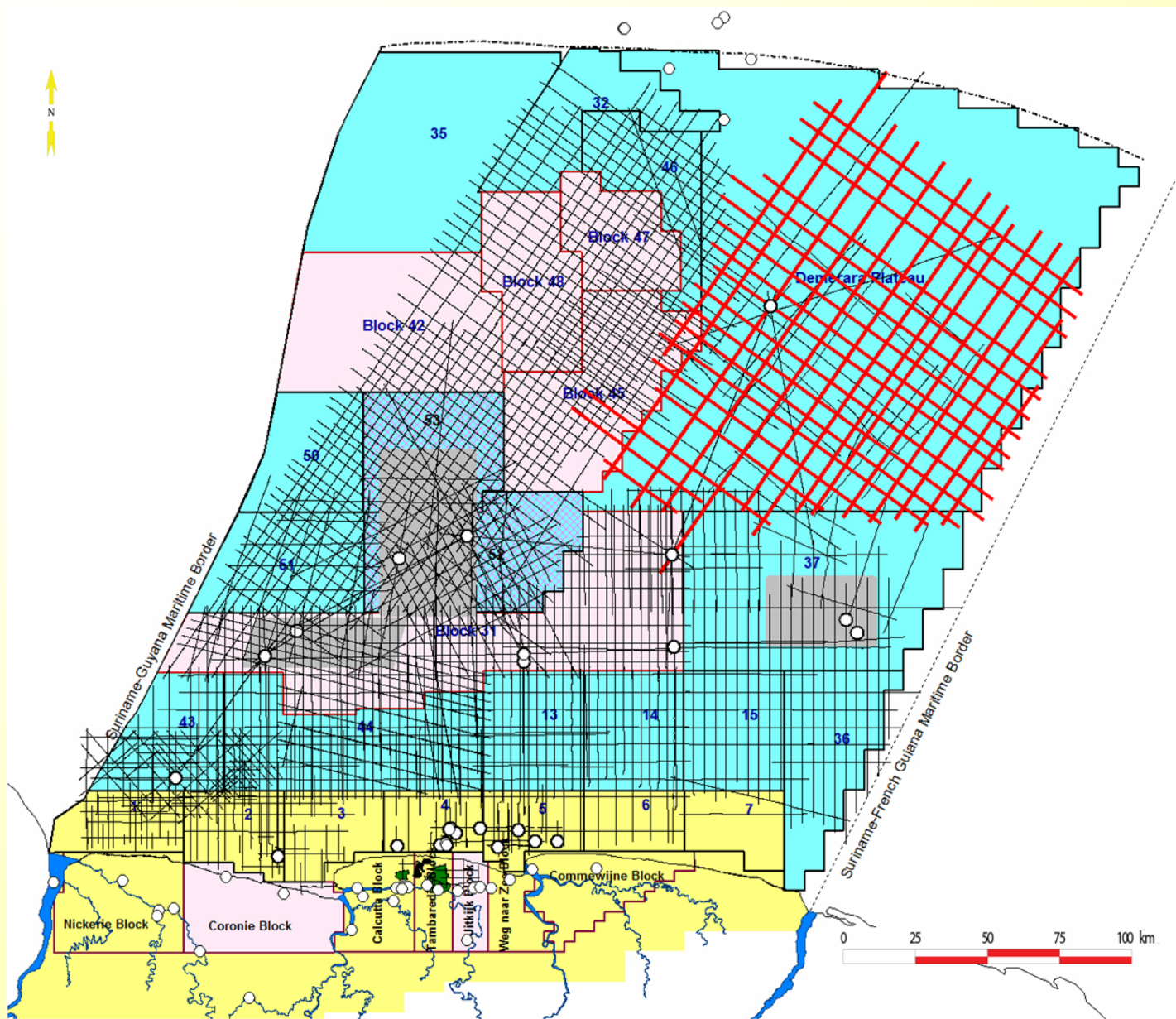
Anticlinal structures from Early Albian compression

Fault blocks from Late Albian extension

Gravitational Fault blocks Demerara Western Flank



Database Q.3 2012



Timeline

Schedule of Events Suriname International Bidding Round 2013						
✓	Data Acquisition	Q4 2011				
✓	Finish Data Processing		Q3 2012			
	Data Package 2012 available			Q4 2012		
	Announcing 2013 Bidding Round				Q1 2013	
	Closing 2013 Bidding round					Q3 2013
	Block awarding					Q4 2013



Visit Us at booth # 629

Contact:

Staatsolie Maatschappij Suriname N.V.

Attn: Manager Petroleum Contracts

Mrs. M. Daal-Vogelland

Email: madaal@staatsolie.com

Web site: www.staatsolie.com/pio