



ENVOI
delivering energy opportunities

delivering energy opportunities



International Opportunities

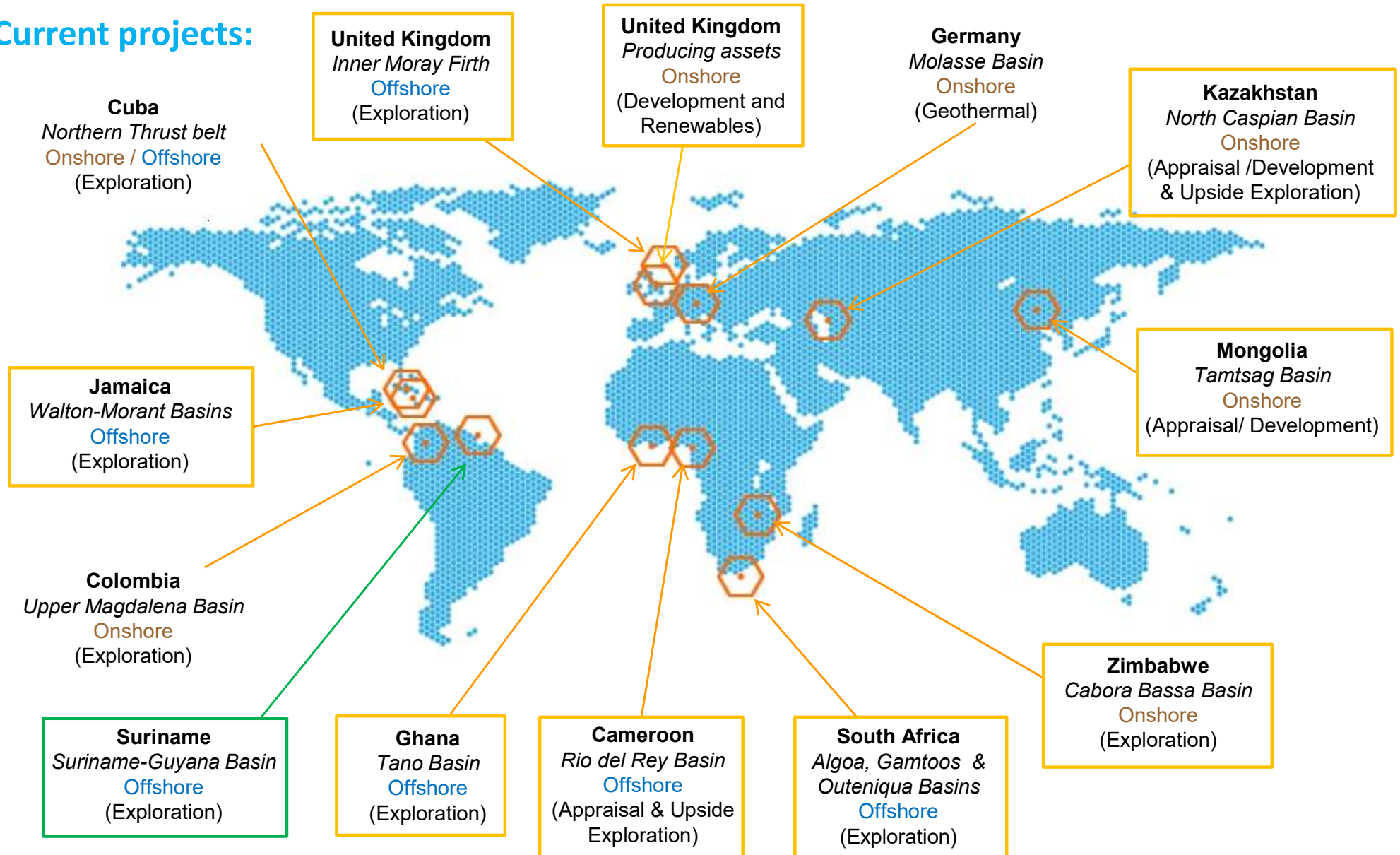
Houston, August 2022

Martin Riddle

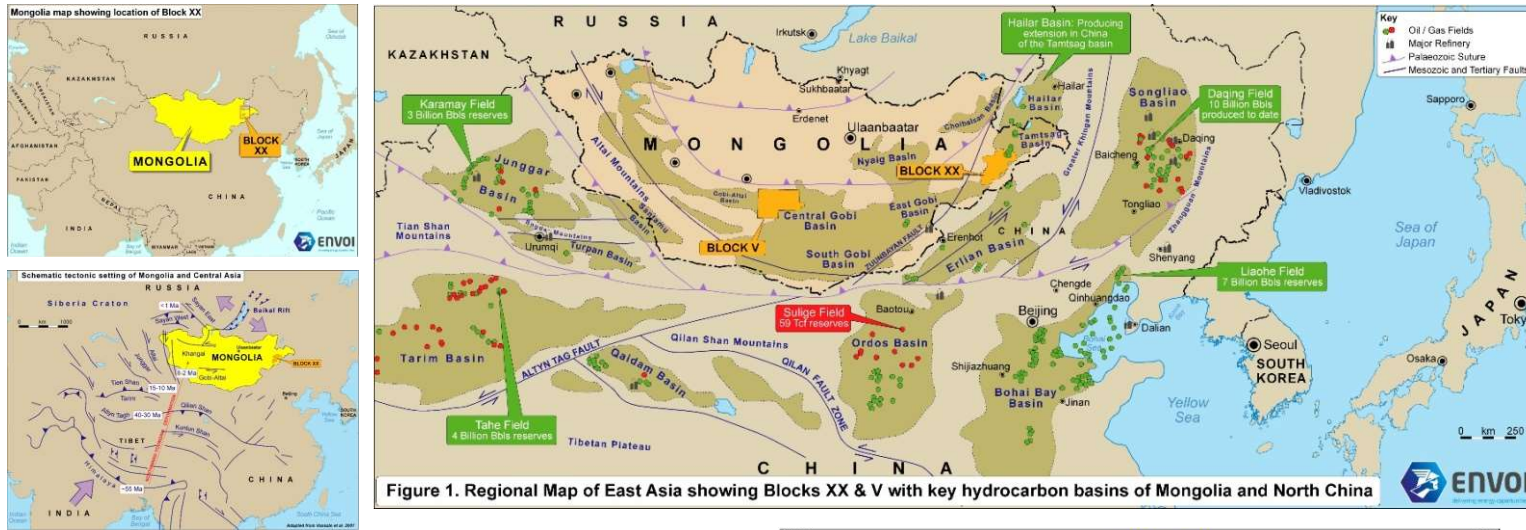
Specialist A&D Services to the international Upstream Oil & Gas Industry



Current projects:



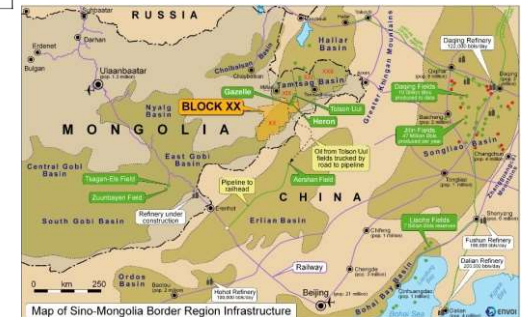
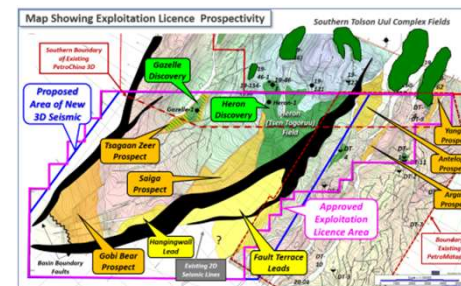
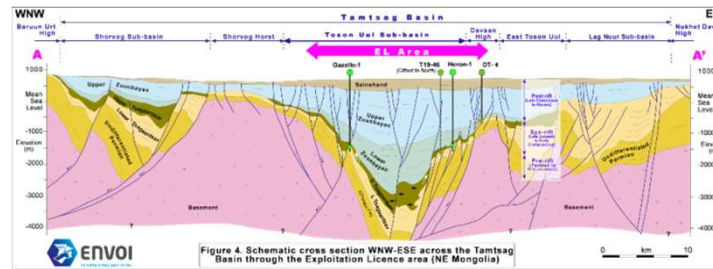
1: Mongolia: Tamtsag Basin



Summary of Relevant Mongolian Petroleum Geology

AGE	FORMATION	LITHOLOGY	PETROLEUM GEOLOGY	HYDROCARBON OCCURRENCES
QUATERNARY	Qingshai	Clay		
	Yanhuo	Clay		
	Yanhuo	Clay		
TERTIARY	Yanhuo	Clay		
	Yanhuo	Clay		
	Yanhuo	Clay		
PALEOGENE	Yanhuo	Clay		
	Yanhuo	Clay		
	Yanhuo	Clay		
Eocene	Yanhuo	Clay		
	Yanhuo	Clay		
	Yanhuo	Clay		
CRETACEOUS	Yanhuo	Clay		
	Yanhuo	Clay		
	Yanhuo	Clay		
JURASSIC	Yanhuo	Clay		
	Yanhuo	Clay		
	Yanhuo	Clay		
TRIASSIC	Yanhuo	Clay		
	Yanhuo	Clay		
	Yanhuo	Clay		
PERMIAN	Yanhuo	Clay		
	Yanhuo	Clay		
	Yanhuo	Clay		

Figure 5.



Petromatad(100% & Operator)

Opportunity to join in appraisal and development of two Lower Cretaceous discoveries

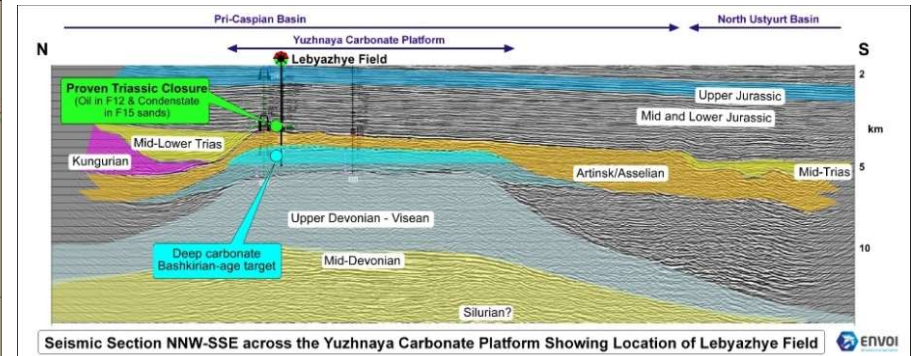
Prospectivity

- Established export route from producing fields
- 25 year exploitation licence granted in June 2021
- Option to participate in Petromatad's other Mongolian opportunities

Terms

Strategic partner preferred to join in the new EL exploitation licence, with material interest available for contribution to development drilling (est, US\$ 15 million) planned for late 2022 /23 and subsequent 3D seismic programme (est, US\$ 5 million)

2: Kazakhstan: Mangystau Province, Yuzhnaya Block



Lucent Petroleum (100% Interest & Operator)

Region's hydrocarbon potential proven by numerous fields including 6 billion bbl Tengiz field immediately to north of Yuzhnaya Acreage.

Opportunity to participate in Development & Deep exploration of Labyazhye field in Lucent's Yuzhnaya Block

Development of other Munaibai field on Block already funded and in process of development drilling

Prospectivity

Initial development of Labyazhye field's existing 27 MMboe Triassic reserves to be exploited by initial re-entry of existing 4 wells

Two subsequent horizontal wells through Triassic

Deepening of L-14X well to penetrate large undrilled Carboniferous Reef Play potential with est. 150+ MMboe additional resource potential.

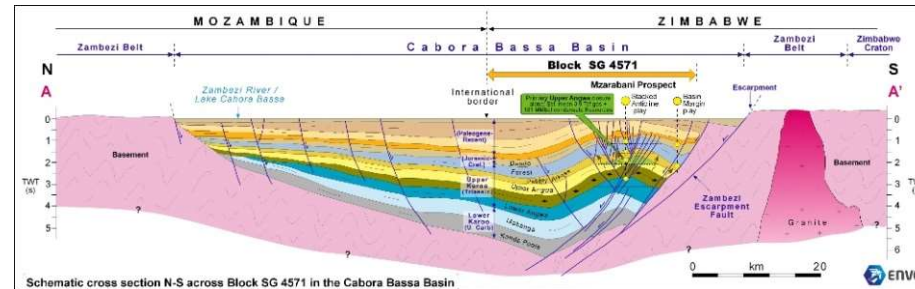
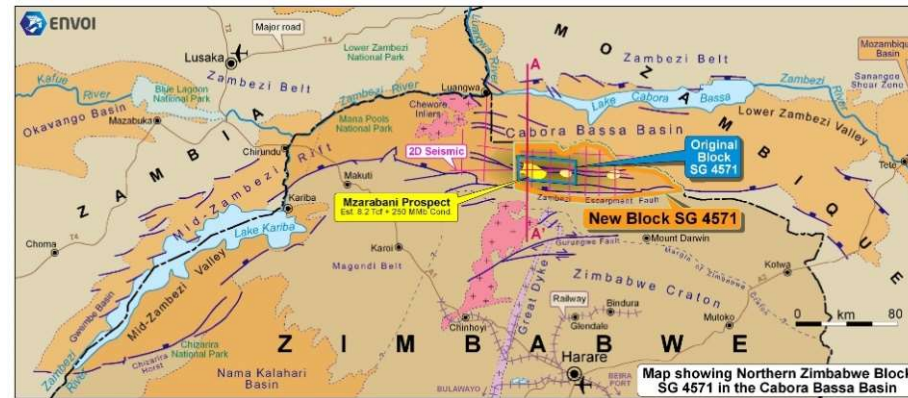
Terms

Earn up to 50% equity by funding the three planned phases of Labyazhye field development & deep exploration, est. US\$ 24.5 million

Phase II & III development funded by Phase I re-entry



3: Zimbabwe: Cabora Bassa Basin



Invictus
80% & Operator
Prospectivity

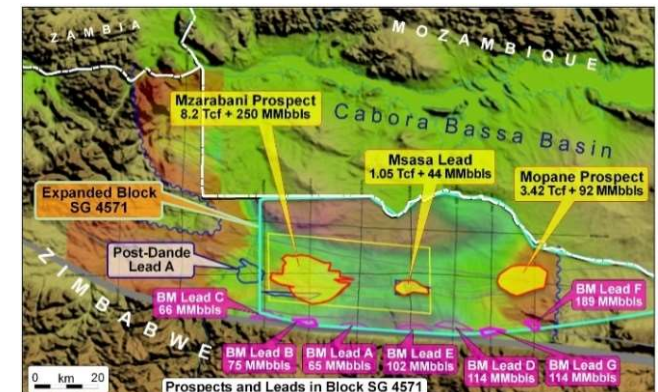
- Thick Permo-Triassic Karoo reservoir potential
- Mature early Triassic 'hot shale'
- Jurassic / Lower Cretaceous basin edge play seen as analogue to Ugandan plays
- Independent CPR by Netherland Sewell estimates that the gross mean unrisked recoverable resource potential from the Mzarabani prospect alone is 4.4 Tcf gas

Work Programme

New enlarged PSC involving two new 4 year exploration terms with drilling imminent at an estimated cost of around US\$ 10 million

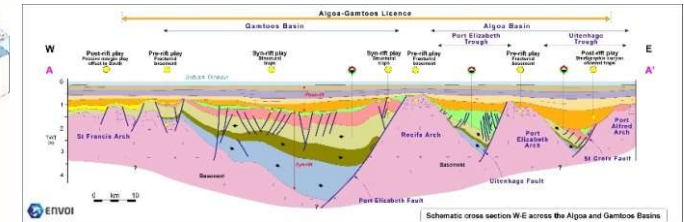
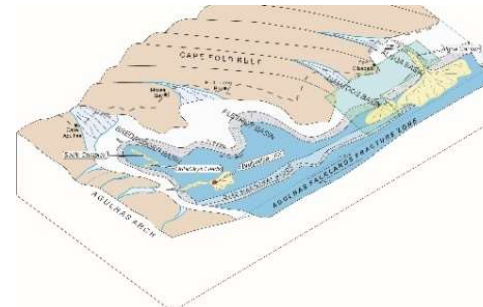
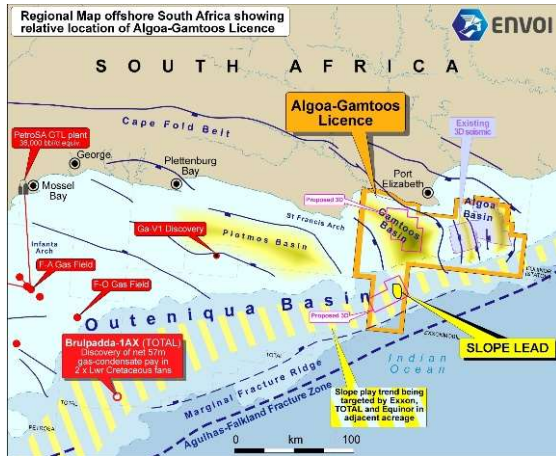
Terms

Earn material share of their 80% interest in the Permit return for appropriate contribution to the planned exploration well and cost of recent seismic



Exploration

4: South Africa: Algoa, Gamtoos & Outeniqua Basins



New Age

50% & Operator. JV partner Tower Resources 50%

Seismic exploration opportunity

Prospectivity

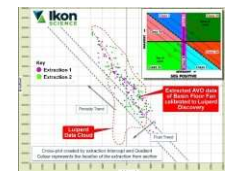
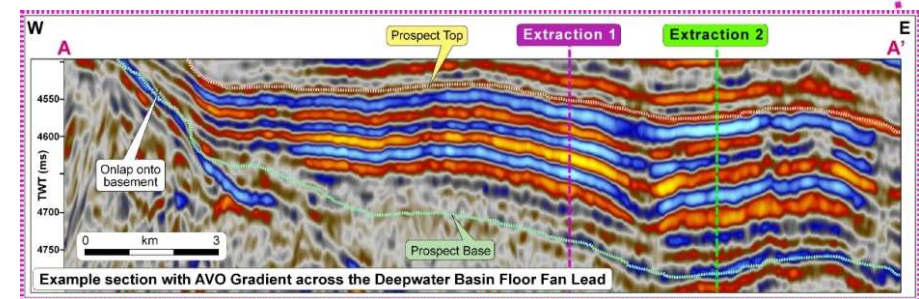
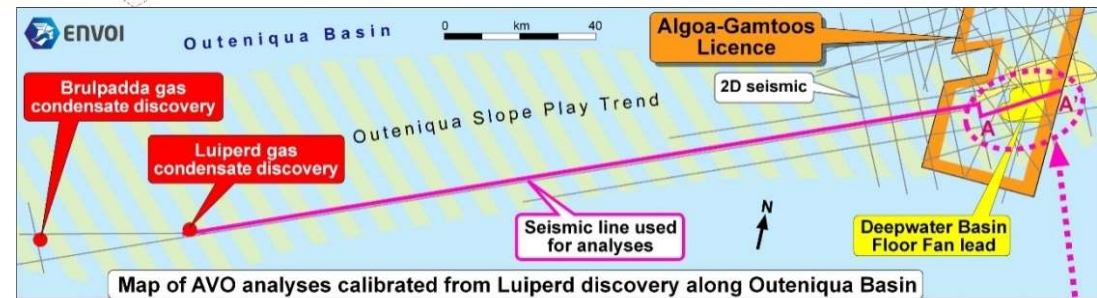
- Stacked Jurassic and Lower Cretaceous marine and fluvial play
- Gamtoos: Syn-rift clastic basin-centered play only drilled on edges looking for traditional rift plays (300 – 500 MMboe each)
- Outeniqua: Undrilled deeper water post-rift slope edge play on trend with large Brulpadda and Luiperd (Total) discoveries

Work Programme

Current Licence Term requires minimum 300 km² 3D seismic acquisition

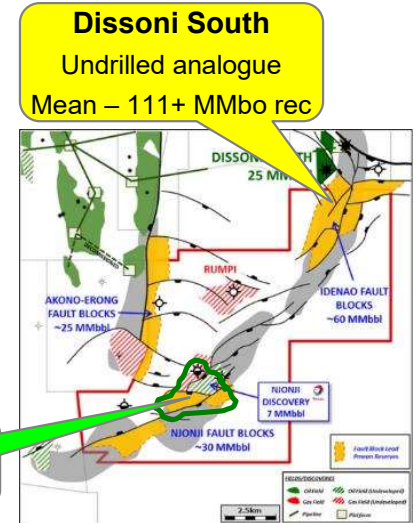
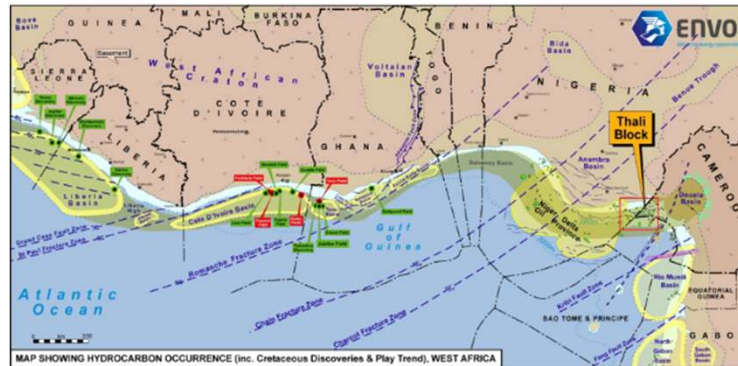
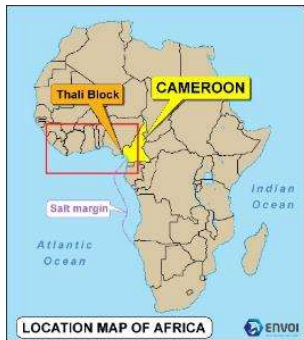
Terms

Earn material interest by commitment to fund new 3D (est US\$ 5 to US\$ 7 million) over Gamtoos or Outeniqua Basin Slope Play



Exploration

5: Cameroon: Rio Del Rey Basin



Tower Resources
100% & Operator

Prospectivity

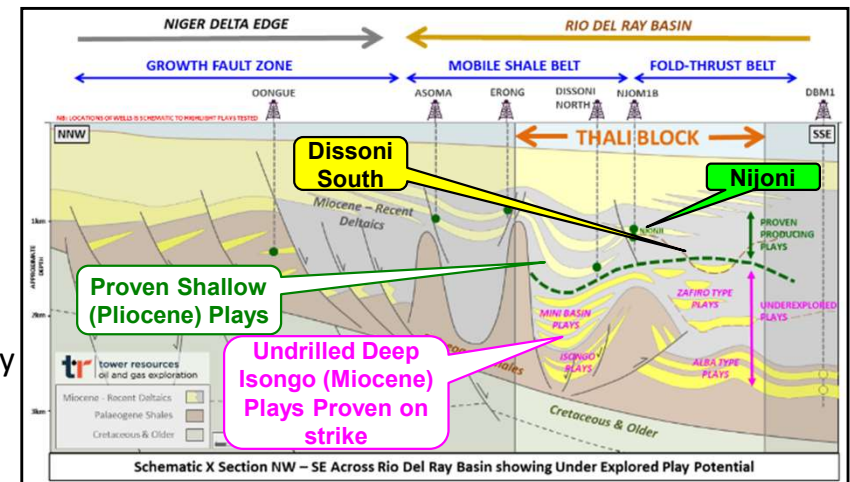
- Shallow Play Potential: Proven Pliocene Play in Rio Del Rey Basin on edge of massive Niger Delta:
- Njonji Discovery made by Total not tested due to poor seismic definition
- 3D Reprocessed by Tower has resolved structure & confirmed combined 36+ MMbbls Contingent + Prospective resource potential (Est. EMV US\$ 148 Million)
- Undrilled South Dissoni Analogue prospects - Est. Mean 111 MMBoe (237 MMbbls Upside)
- Deep Play Potential: Large Billion bbl Miocene Play proven on trend but totally undrilled in Thali Block

Work Programme

Drill Njonji-3 appraisal well to test initial 18 MMbbl resource potential in Northern Closure (Est. US\$ 15 million well cost)

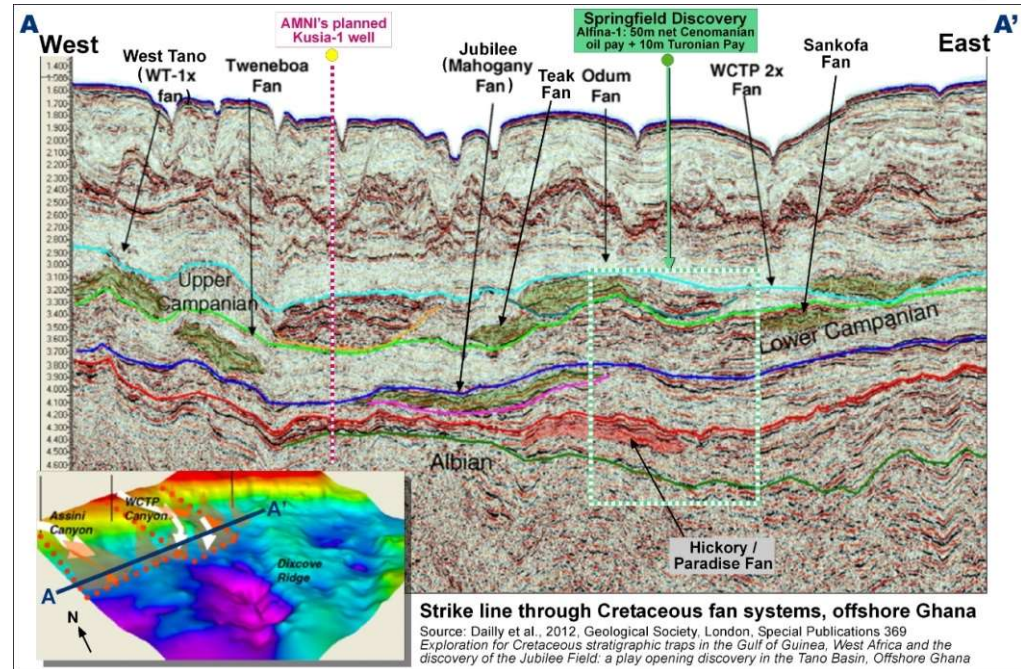
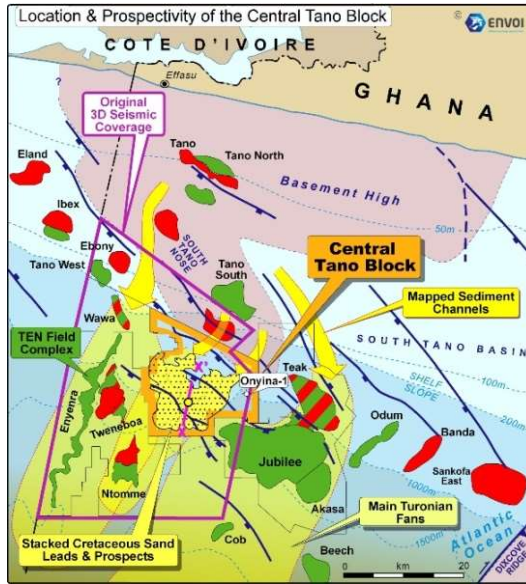
Terms

Earn 49% equity in entire Thali Licence by funding planned appraisal well



Appraisal / Exploration

6: Ghana: Tano Basin, Central Tano Block



AMNI 90% + Operator (GNPC 10% Partner)

Prospectivity

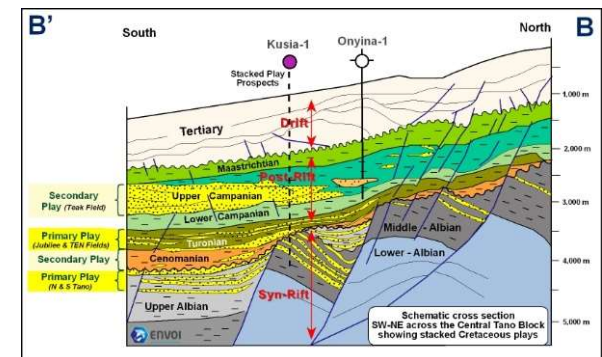
- Cretaceous petroleum play system on transform margin slope proven by existing fields up dip of massive charge & fetch area and unique reservoir development associated with Tano High. Only well in block (Onyina-1) now known to have tested a collapsed channel preventing migration
- Stacked play with primary stratigraphic Turonian (proven in Jubilee & TEN Fields) & Campanian (Teak Field) plays, additional structural Albian play and large undrilled (rotated fault block) prospects mapped. Planned 1st Well will test 4 stacked objectives (Est. Combined 2.27+ Bn bbls In Place Resource)

Work Programme

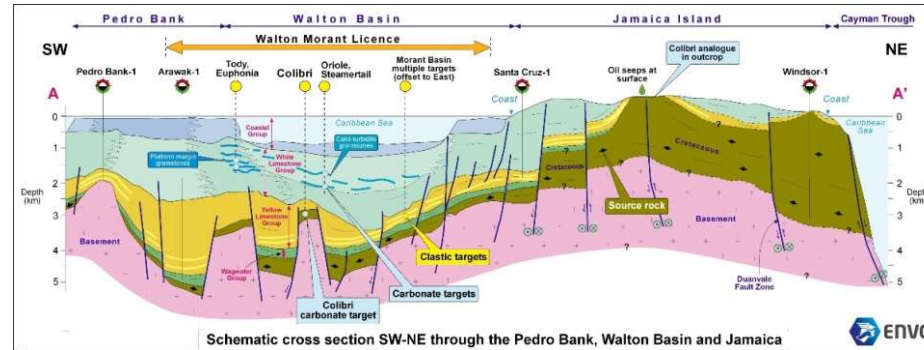
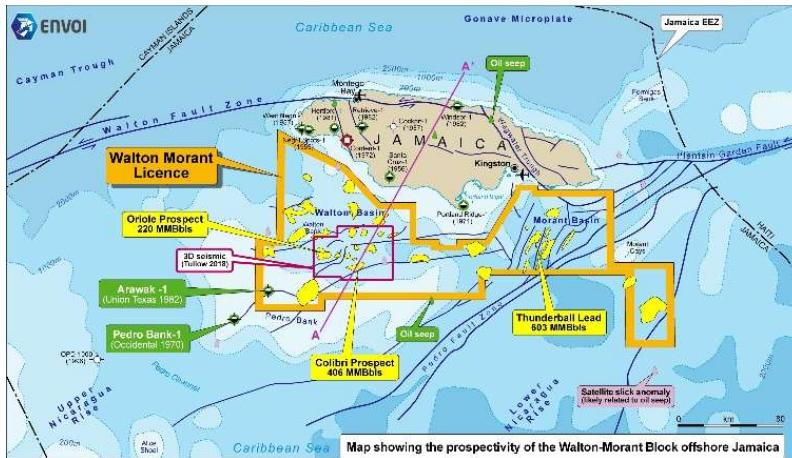
Drill exploration well in 2022 (Est. US\$ 30 Million) regardless of farmout

Terms

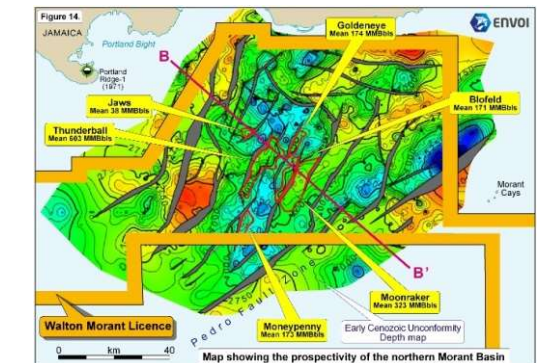
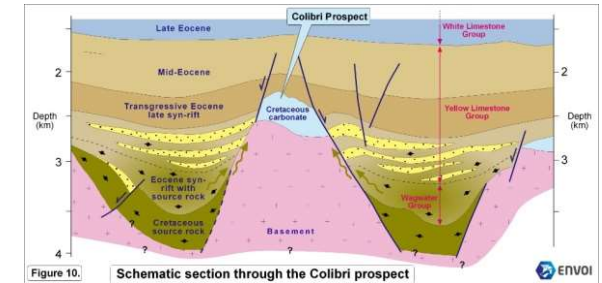
Earn part of AMNI's 90% interest by contribution to drilling programme (est. total gross cost US\$ ~60 million)



7: Jamaica: Walton and Morant Basins



ERA	PERIOD	MAIN LITHOLOGY	SCHEMATIC LITHOLOGY	TECT. PETR. EVOL. GEOL.	HYDROCARBON POTENTIAL
CENOZOIC	Neogene	Pliocene	Coastal Group	Uplift of Jamaica	WALTON BASIN SECONDARY RESERVOIR
		Miocene	Mesabilla		
		Pliocene	White Limestone Group		
	Paleogene	Oligocene	Orinoco	Past-rift	MORANT BASIN PRIMARY RESERVOIR
		Eocene	Prudhoe		
		Eocene	Barren		
		Eocene	Yellow Limestone Group		
		Eocene	Yallahs		
		Eocene	Yallahs		
		Eocene	Yallahs		
MESOZOIC	Cretaceous	Upper	Yellow Limestone Group	Past-rift	WALTON BASIN PRIMARY RESERVOIR
		Lower	Yellow Limestone Group		
		Lower	Yellow Limestone Group		
	Lower	Albian	Devil's Rock Group	Pre-rift	WALTON BASIN PRIMARY RESERVOIR
		Albian	Devil's Rock Group		
		Albian	Devil's Rock Group		
		Albian	Devil's Rock Group		
		Albian	Devil's Rock Group		
		Albian	Devil's Rock Group		
		Albian	Devil's Rock Group		



United Oil and Gas (100% & Operator)

Opportunity to participate in exploration of very large 22,400 km² licence over two undrilled basins

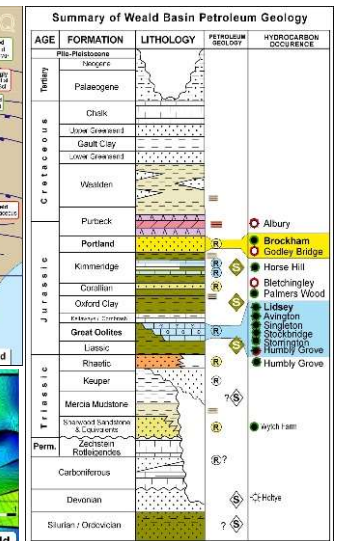
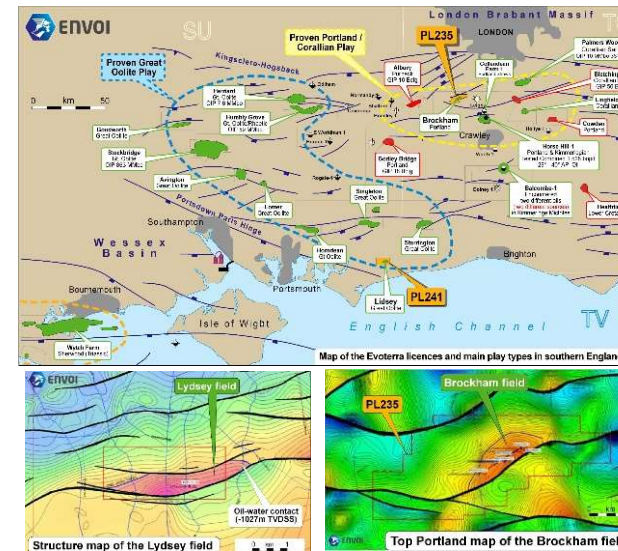
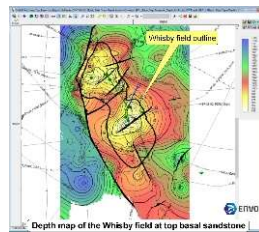
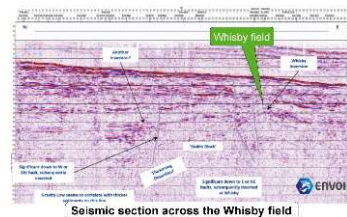
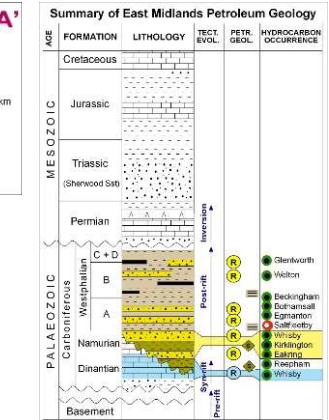
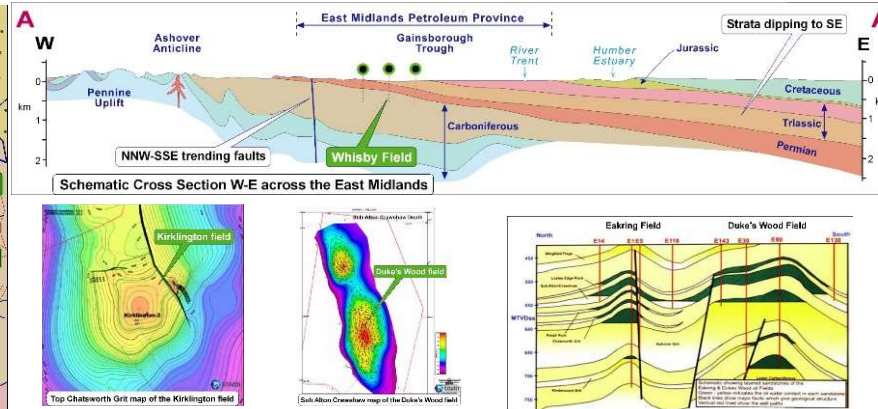
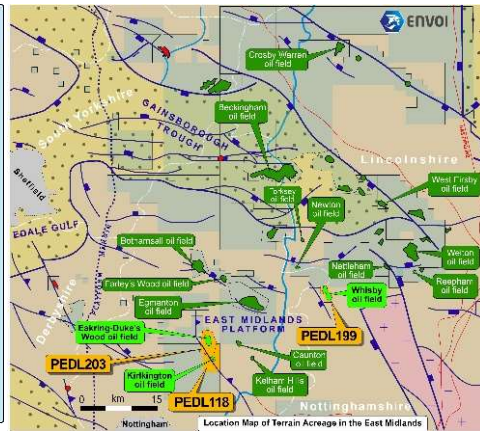
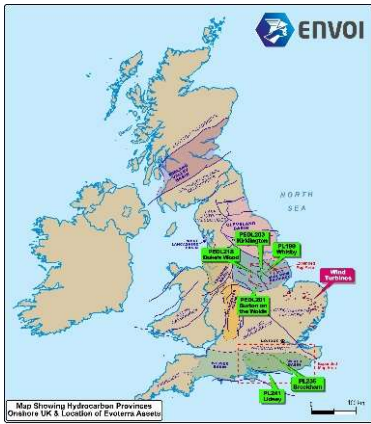
Prospectivity

- Stacked Cretaceous and Eocene plays
- Over 2 billion bbls in just 11 of the 21 mapped prospects and leads
- Primary 3D defined Colibri Prospect with estimated 406 MMbbls mean recoverable oil

Terms

Earn a material interest in return for funding the first exploration well before January 2024

8: UK: Conventional upstream assets plus renewables



Evoterra (!00% owner of two subsidiaries, Terrain and MicroEnergy)

Terrain

- Non-operated interests in six onshore UK licences with production cash flow.

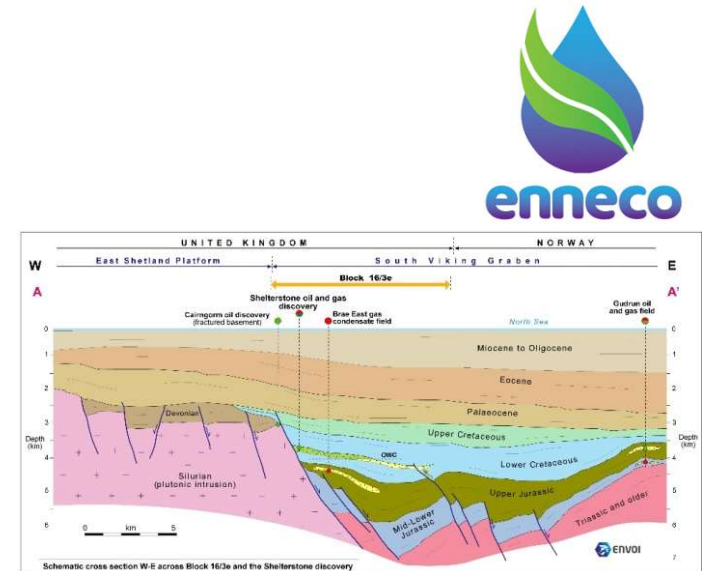
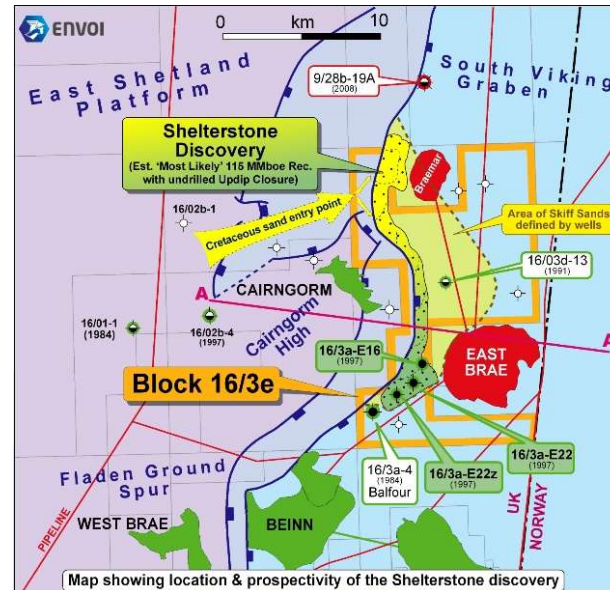
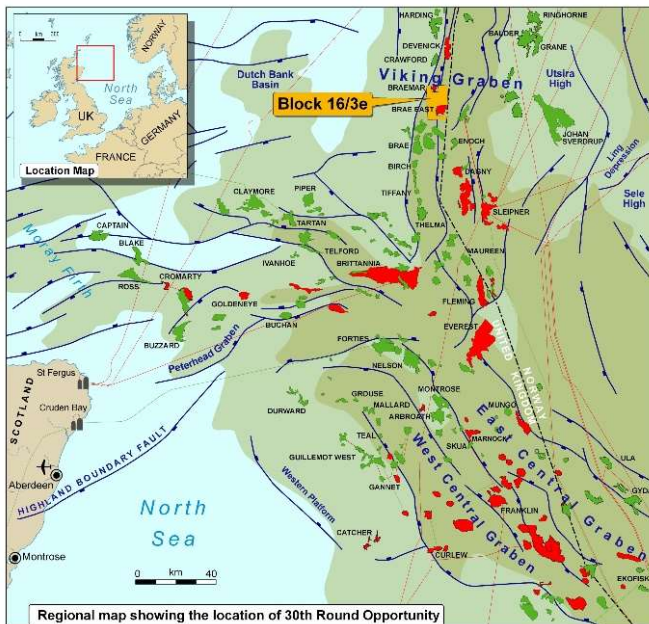
MicroEnergy

- Cash flow from 139 wind turbines, mostly in East Anglia

Terms

Evoterra is inviting cash bids for its assets/subsidiaries

9: UK: Central Graben, Licence P2370



ERA	PERIOD/STAGE	TYPICAL SEPTH LITHOL. (mbsl)	SCHEMATIC LITHOL.	TECT. EVOL.	PET. GEO.	HYDROCARBON OCCURRENCE
CENOZOIC	Tertiary to Quaternary	80	Un differentiated			
	Eocene to Pleistocene					
	Paleocene					
MESOZOIC	Late					
	Early					
	Mid					
	Early					
	Late					
	Mid					
Palaeozoic	Devonian					
	Silurian					

Enneco (100% & Operator)

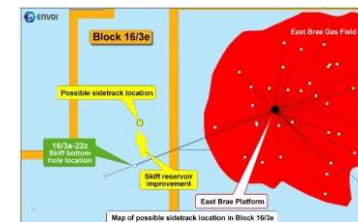
Opportunity to participate in exploitation of undeveloped Lower Cretaceous Shelterstone discovery

Prospectivity

- Well flowed over 6 MMcf/d and 300 bopd on test from just 5 m of net pay
- Estimated most likely 515 Bcf and 30 MMbc recoverable potential with significant upside
- Local infrastructure for rapid development

Terms

Material interest in return for funding share of work programme



10: Suriname: Suriname-Guyana Basin



Contact:

London Office : Old Stables House
1d Manor Road
London W13 0LH
United Kingdom

Phone : +44 (0)20 8566 1310
E Mail : deliver@envoi.co.uk
Website : www.envoi.co.uk



www.envoi.co.uk

Registered Office & Company Secretary:
1d Manor Road, London, W13 0LH