

# PERU

## OPEN ACREAGE



**Jimmy Cotrina**  
Geologist



**EL PERÚ PRIMERO**

August 2019



# AGENDA

- Current Situation in Peru
- Hydrocarbon Potential
- Peruvian Contracting Framework



# AGENDA

- Current Situation in Peru
- Hydrocarbon Potential
- Peruvian Contracting Framework



# CUENCAS SEDIMENTARIAS



El 98% de los pozos exploratorios se concentran solo en 4 cuencas:  
TALARA, MARAÑÓN, UCAYALI y SECHURA

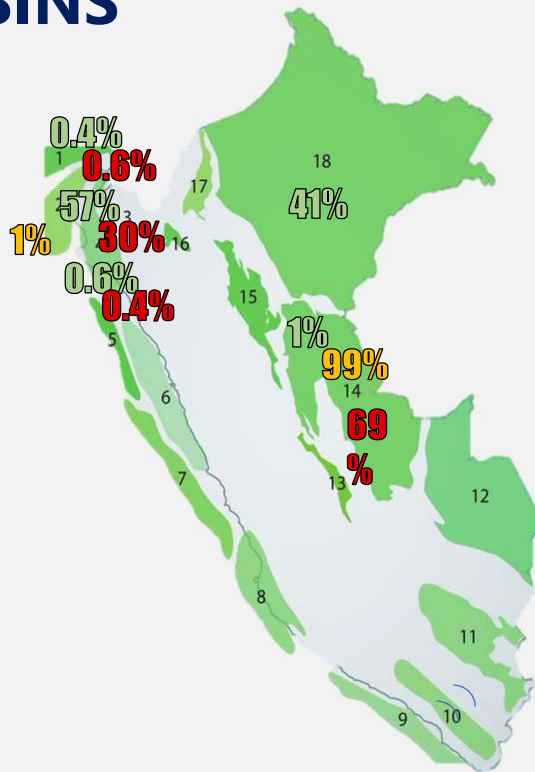


**PERU** → 4,286\* MMBOE

Produces Oil & Gas since 1869 !!

## 18 BASINS

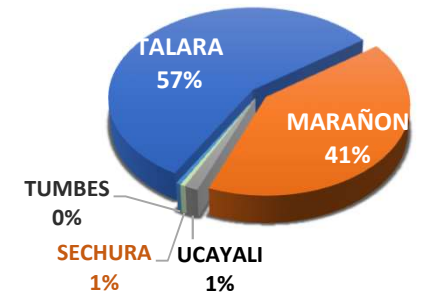
- 1 TUMBES
- 2 TALARA
- 3 LANCONES
- 4 SECHURA
- 5 TRUJILLO
- 6 SALAVERR Y LIMA
- 7 PISCO
- 8 MOLLENDO



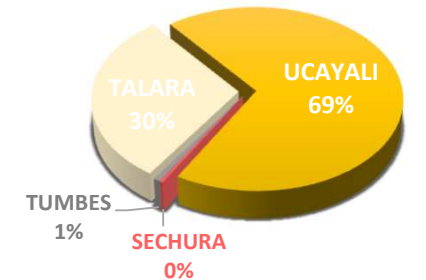
- 10 MARAÑON
- 11 SANTIAGO
- 12 BAGUA
- 13 HUALLAGA
- 14 UCAYALI
- 15 ENE
- 16 MADRE DE DIOS
- 17 TITICACA
- 18 MOQUEGU A

(\* Total Historical Production of Oil, Gas and NGL.

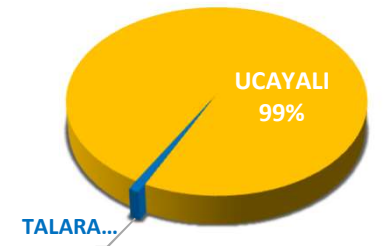
**OIL**  
2,577 MMBLS



**GAS**  
7,374 BCF



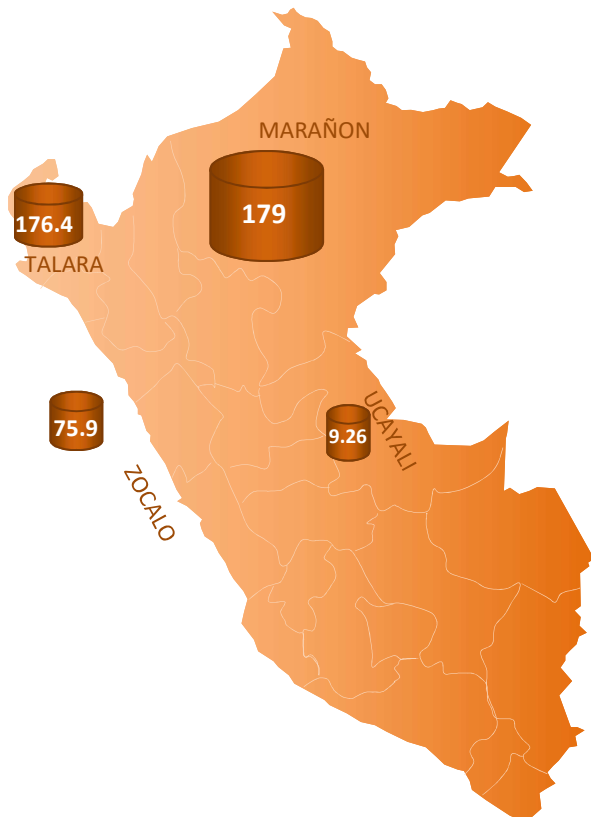
**NGL**  
398 MMBLS



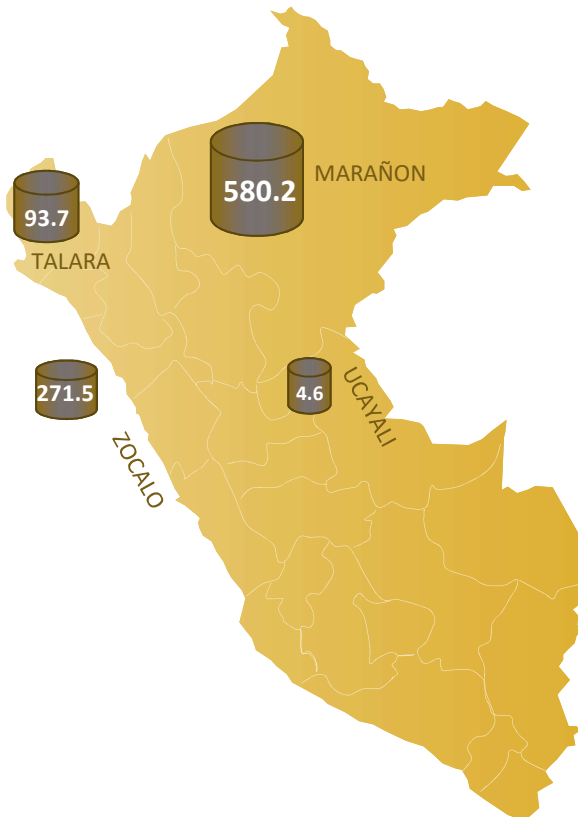


# OIL RESERVES AND RESOURCES

Reserves Proved + Probable  
**440 MMbbl**

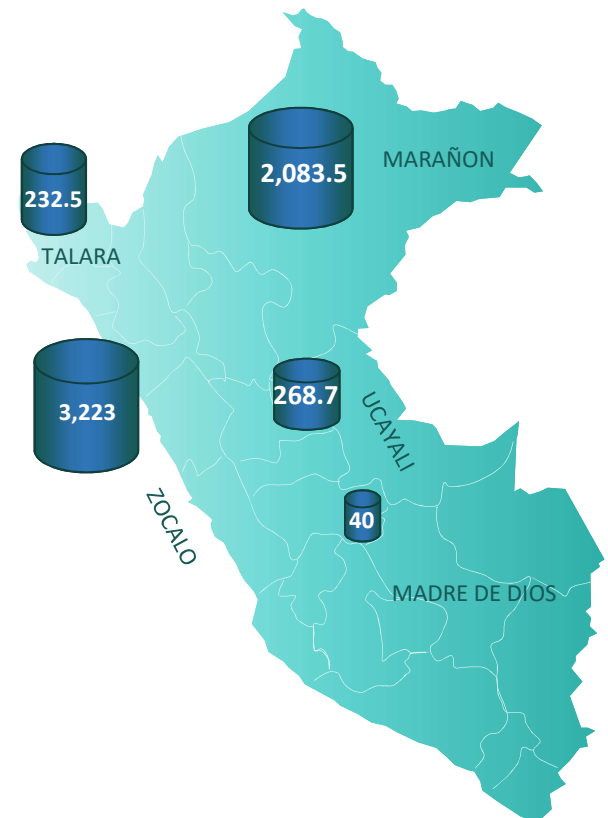


Contingent Resources  
**960 MMbbl**



+ 5.95 MMbbl in available areas

Prospective Resources  
**14,792.34 MMbbl**

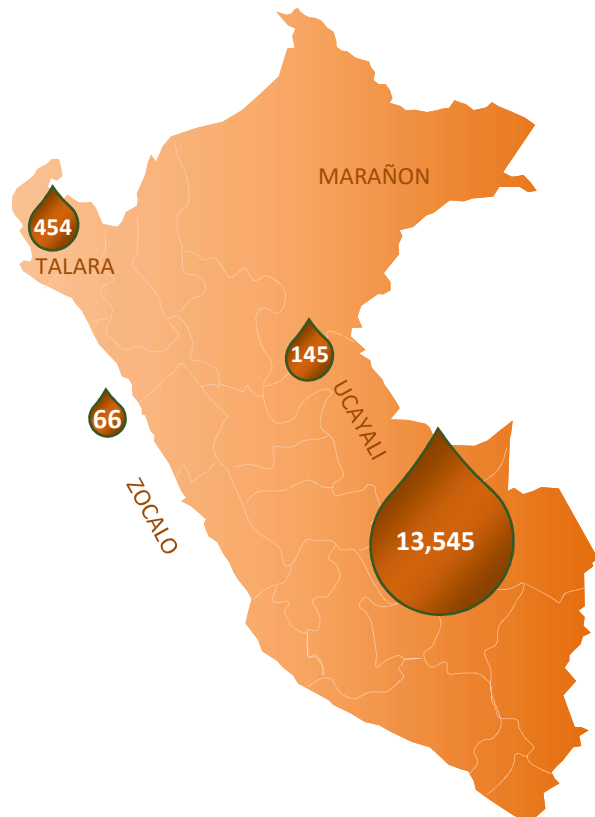


+ 8,943 MMbbl in available areas

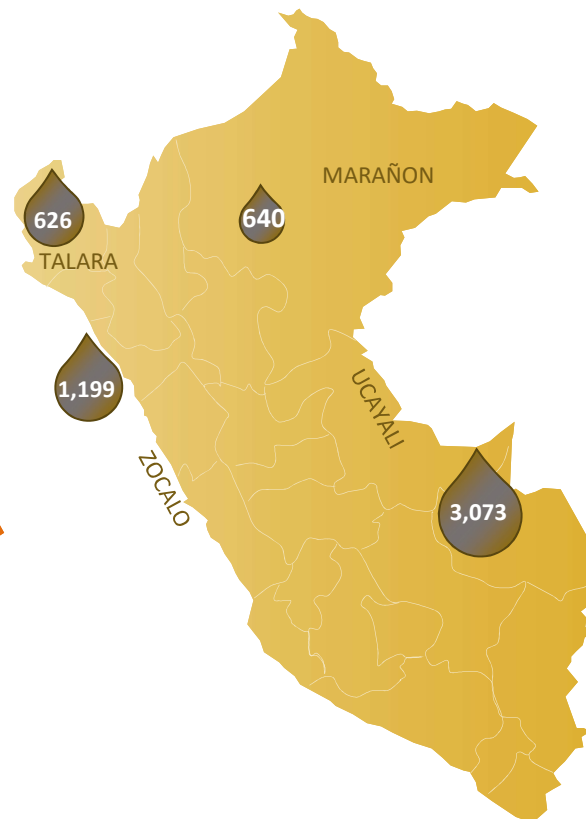


# GAS RESERVES AND RESOURCES

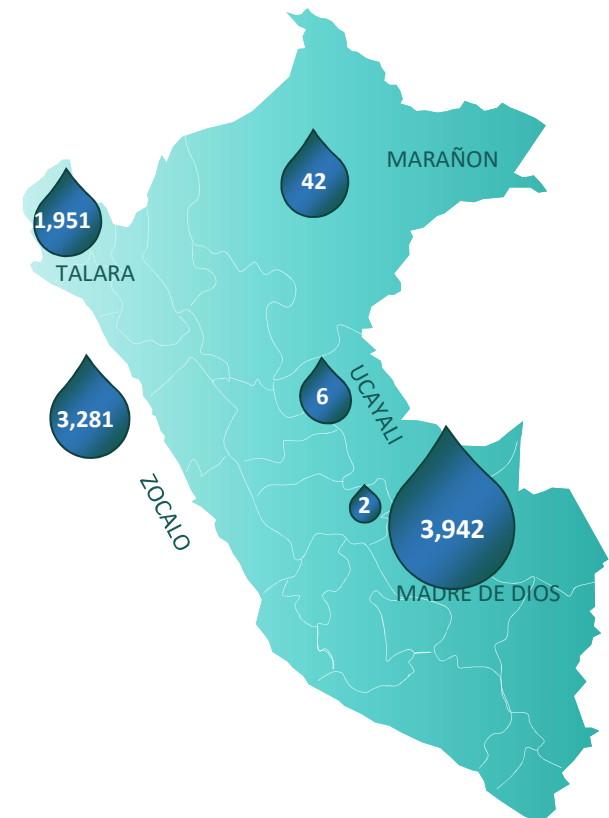
Reserves Proved + Probable  
**14,210 BCF**



Contingent Resources  
**5,540 BCF**



Prospective Resources  
**35,157 BCF**



**+ 25,933 BCF in available areas**



# AGENDA

- Current Situation in Peru
- Hydrocarbon Potential
- Peruvian Contracting Framework





# MARAÑÓN BASIN GENERAL INFORMATION

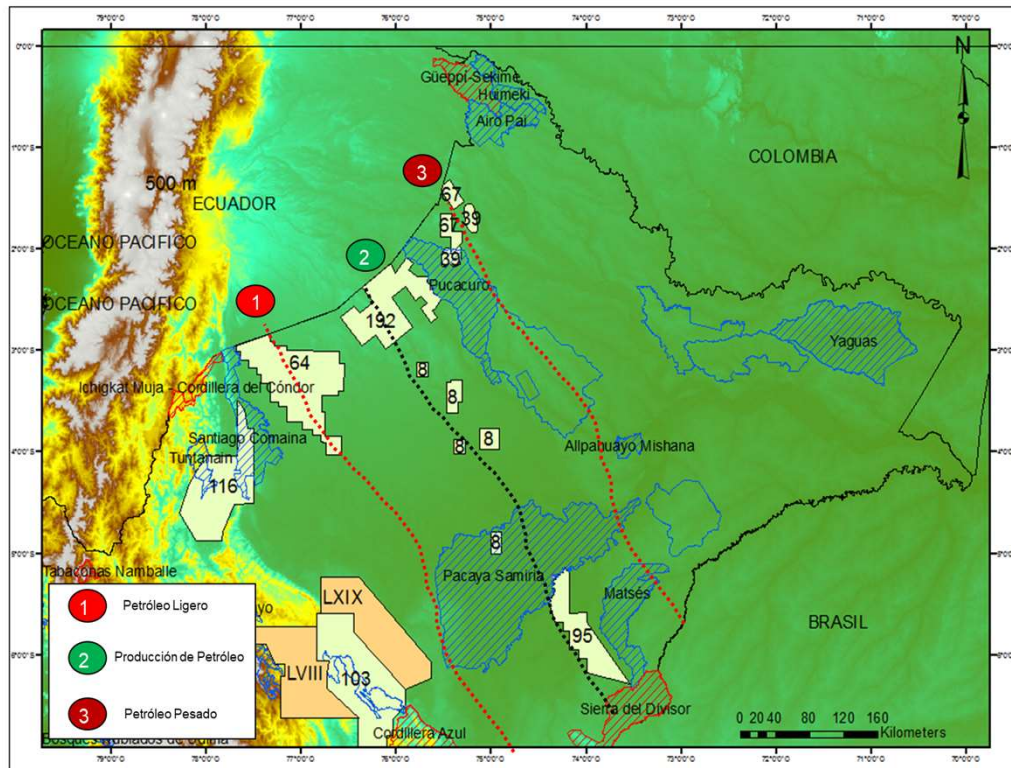


Fuente: Arthur D`Litte, 2016 – Mod: PP - 2019

Marañón, Ucajali and Madre de Dios basins are part of the Sub-Andean basin strip that extends from the Andes to the Brazilian shield and Guayano.



# MARAÑÓN BASIN GENERAL INFORMATION



## GENERAL CHARACTERISTICS

AREA:	85.0 MM ACRES
WELL DRILLED	113
DISCOVERY:	36
NON-COMERCIAL:	12
OIL SHOWS	28
DRY	34
AVG. CRUDE OIL:	10.5 To 32 °API
REGISTERED SEISMIC:	60,000 Km. 2D & 3,000 Km 3D
STRUCTURES	113 DRILLED
PROSPECTS & Lead	179
DISCOVERY FIELDS:	36
PRODUCTION AVERAGE:	13,714 BOPD
CUMULATIVE PRODUCTION:	1,057 MMSTB

(As of Dec-2017)





# UCAYALI BASIN GENERAL INFORMATION



## GENERAL CHARACTERISTICS

<b>AREA:</b>	35,3 MM ACRES 14,3 MM HECTAREAS
<b>WELL DRILLED</b>	60
<b>DISCOVERY:</b>	11
<b>NON-COMERCIAL:</b>	4
<b>OIL OR GAS SHOWS</b>	18
<b>DRY</b>	24
<b>AVG. CRUDE OIL:</b>	29 To 44 °API
<b>REGISTERED SEISMIC:</b>	26,827 Km. 2D & 2,255 Km 3D
<b>STRUCTURES</b>	51 DRILLED
<b>PROSPECTS</b>	163
<b>PRODUCING FIELDS:</b>	4 (OIL) & 10 (GAS)
<b>PRODUCTION AVERAGE:</b>	2,773 BPD (OIL), 84,452 BPD (NGLs) 1'184,412 MCFD (G&C).
<b>CUMULATIVE PRODUCTION:</b>	35 MMSTB 304 MMSTB
<b>RESERVES PROVED + PROBABLE</b>	9.26 MMbbl / 13,690 BCF
<b>CONTINGENT RESOURCE:</b>	0.5 MMbbl / 3,073 BCF
<b>PROSPECTIVE</b>	13.8 MMbbl / 3,955 BCF

(As of Dec-2017)





# SHESHEA GENERAL INFORMATION

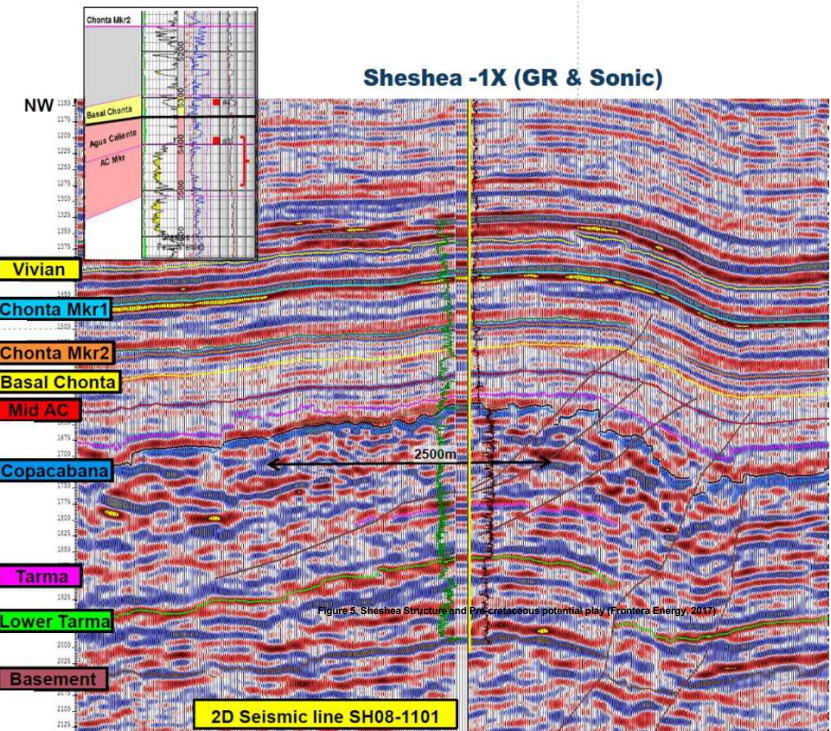
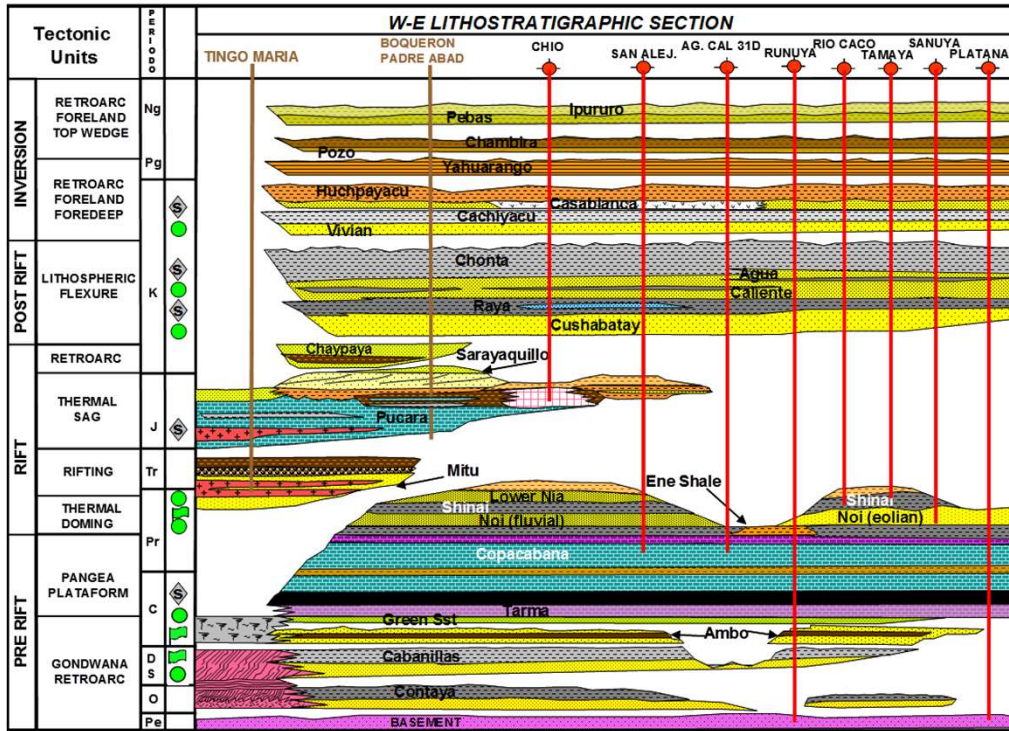


Figure 5. Sheshea Structure and Pre-Cretaceous potential play (Frontera Energy, 2017)

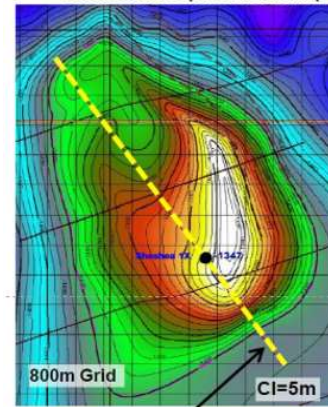
## SHESHEA INFORMATION

Location	Coronel Portillo Prov. Ucayali Region
Discovery	September 8, 2012
Spud Date	July, 2012
Area (Ha.)	446,870.378
Well Drilled	4
Producers Wells	0
	OXY / HIS
Acquired Seismic	( 2D – 2,989.3 Km / 3D – 155.46 Km )
Mesure Depth (m)	2,720.3

## SHESHEA RESERVOIR INF.

Formation	Basal Chonta
Initial Pressure (psi)	2108
Transmissibility (md.ft.)	1380
Type	Oil
Dens. (°API)	53
GOR	37
IP (BFPD/Psia)	1.4
Bo_Lab (BI/STB)	1.06
Type	Sandstone
Net Pay (m)	4
Porosity (%)	25
Permeability (mD)	400

## SE Basal Chonta Depth Structure Map



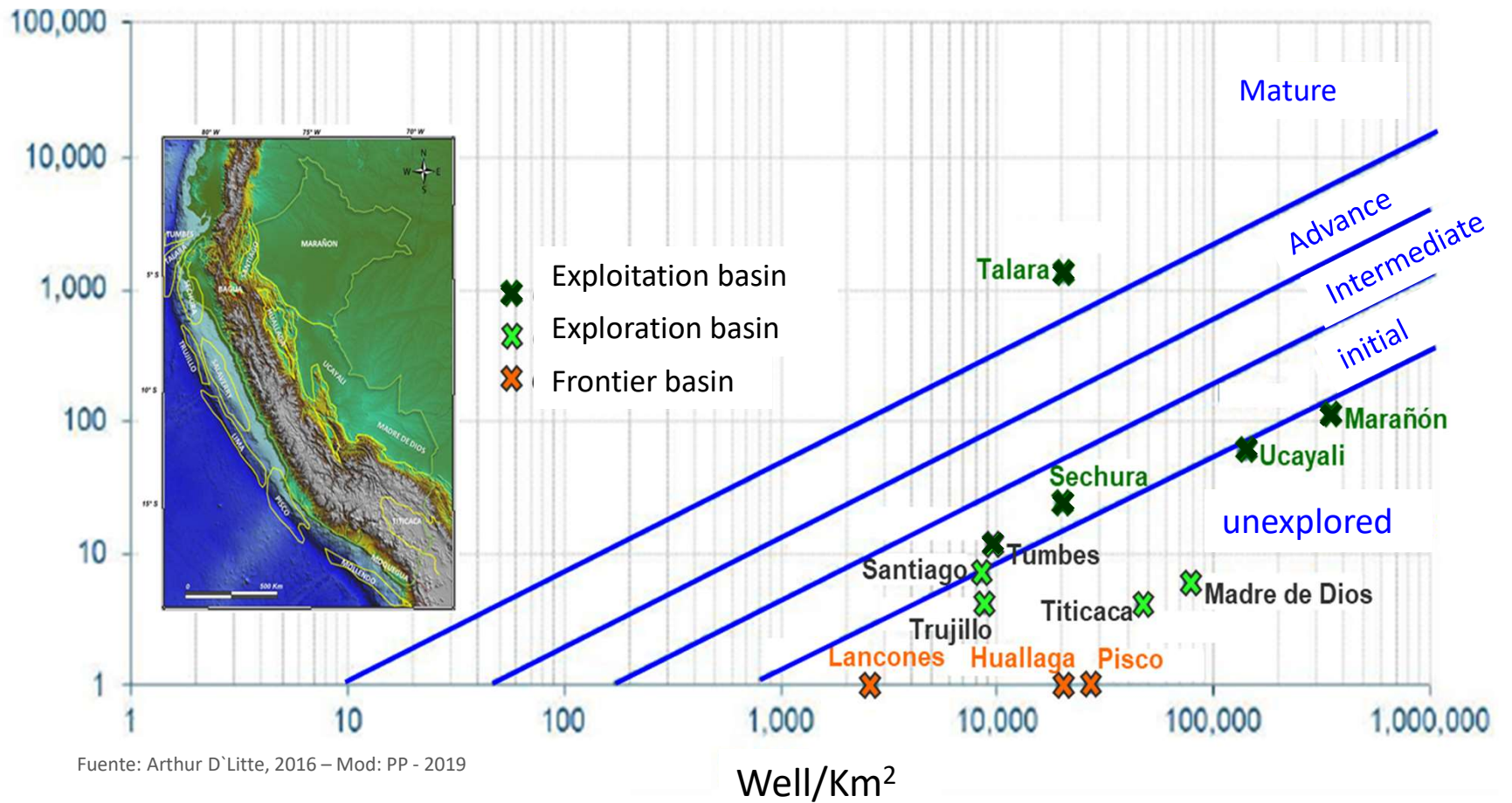
2D Seismic line SH08-1101





# BASIN STATUS

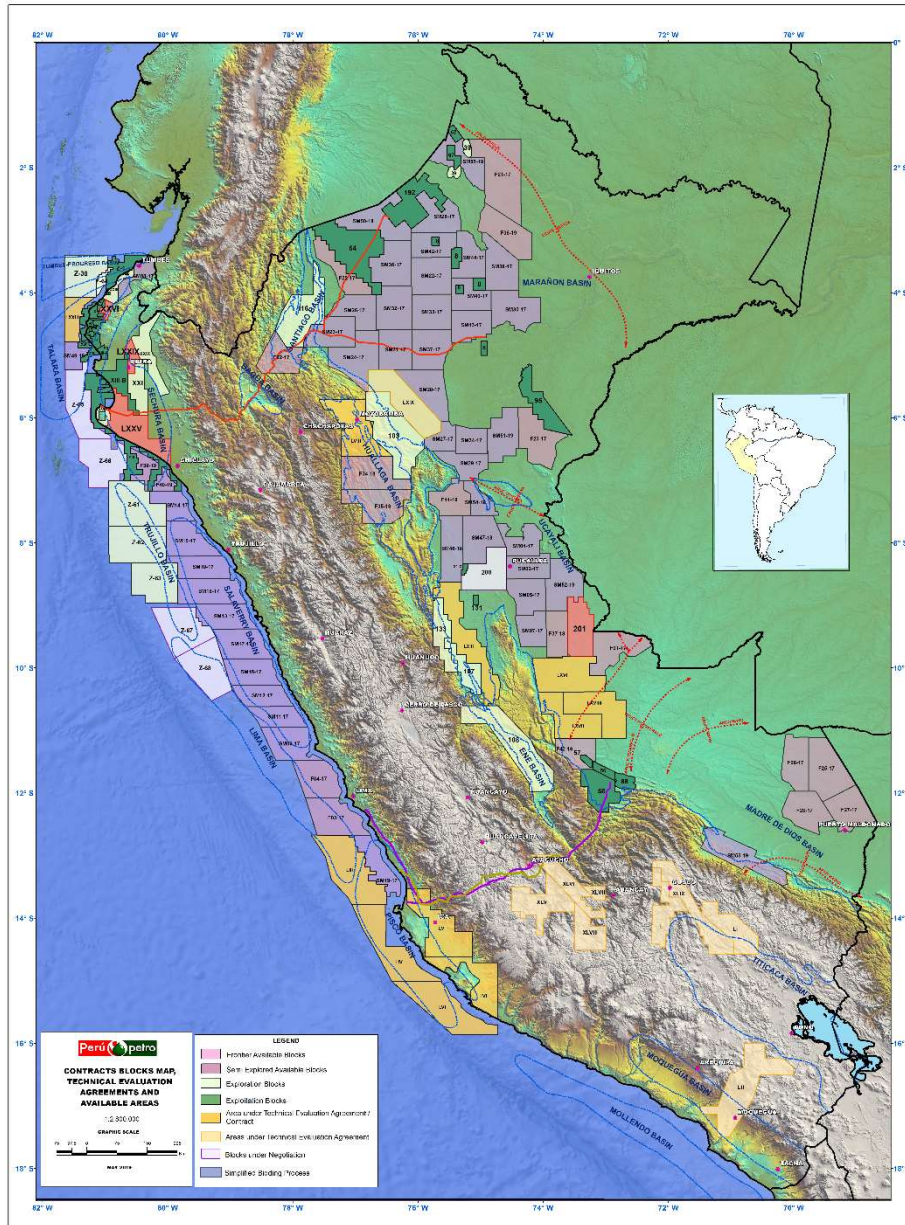
Number of wells







# CONTRACTS AND AGREEMENTS IN FORCE



## 25 EXPLOITATION CONTRACTS

- ✓ 11 in Coast
- ✓ 03 in Offshore
- ✓ 11 in Jungle

## 15 EXPLORATION CONTRACTS

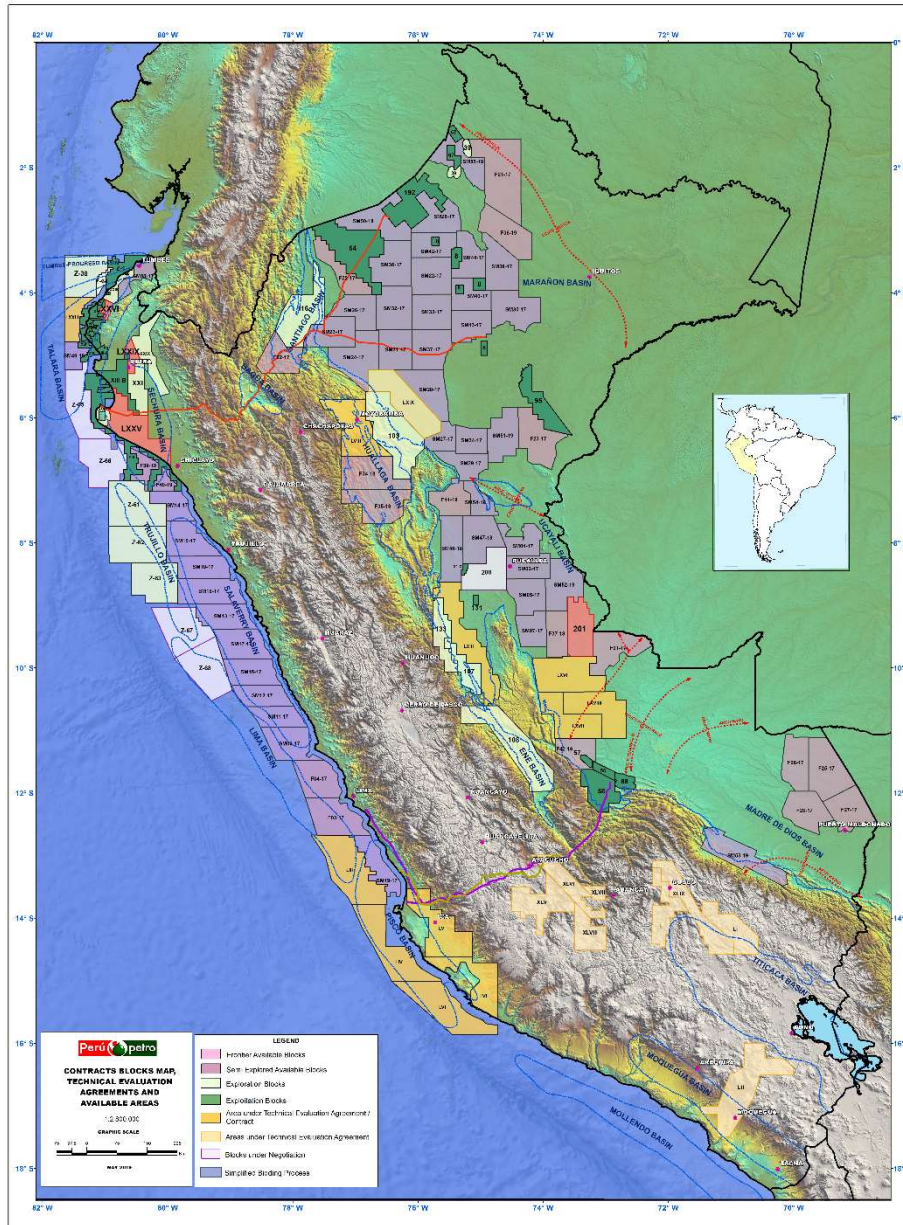
- ✓ 04 in Coast
- ✓ 05 in Offshore
- ✓ 06 in Jungle

## 20 TECHNICAL EVALUATION AGREEMENT

- ✓ 16 in Onshore
- ✓ 04 in Offshore



# AVAILABLE AREAS



**68 AREAS** Proposed for  
**CONTRACT** or **TEA**.

- ✓ 49 **SEMI EXPLORATED** areas,  
Avg area: 382,000 ha.
- ✓ 19 **FRONTIER** areas  
Avg area: 447,000 ha.

**AREAS** could be  
**redefined**





# AGENDA

- Current Situation in Peru
- Reserves & Resources in Peru
- Peruvian Contracting Framework





# LICENSE CONTRACTS



## CONTRACT PERIOD


Exploration Phase:  
7 years + 3 years extension

Exploitation Phase:  
Oil 30 years & Gas 40 years



## Retention Period for Non Commercial Discoveries:

5 years to build oil transport facilities and  
10 years in case of Non-associated Gas to develop market



**Exploratory Working Units** in excess in one period may be carried forward to the following period



## Royalties linked to success:

5% to 20%, depending on production rate  
5% to 25%, depending on a "R" Factor.



# HOW TO STEP IN PERU?

## DIRECT NEGOTIATION:

- Previous Qualification Process: Technical, Economic and Financial capacity

01

## BIDDING PROCESS

- New onshore blocks to be individually offered in 2019.

02

## TECHNICAL EVALUATION AGREEMENTS

- On Frontier and Semi-explored areas.
- First Option Right to Negotiate a License Agreement.

03



*Visit us in booth Nr. 01*

*¡Thank you!*

[www.perupetro.com.pe](http://www.perupetro.com.pe)