



# Greenland

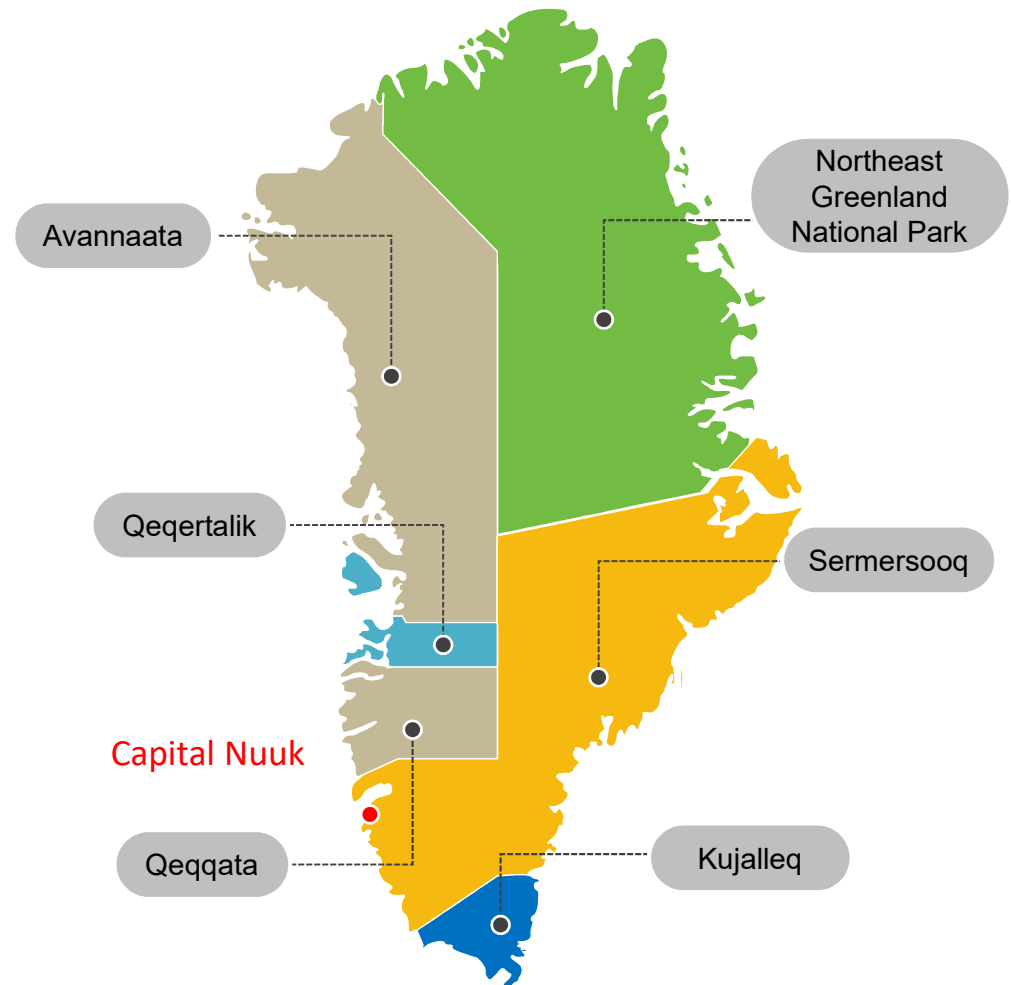
Ministry of Industry and Energy



# Greenland

## Introduction

- Part of the Kingdom of Denmark.
- Home rule since 1979.
- Self-Government since June 2009.
- Population: approx. 57,000.
- 5 municipalities.
- Latitudes 59°46' N to 83°39' N.
- North-South 2,670 km.
- East-West 1,050 km.



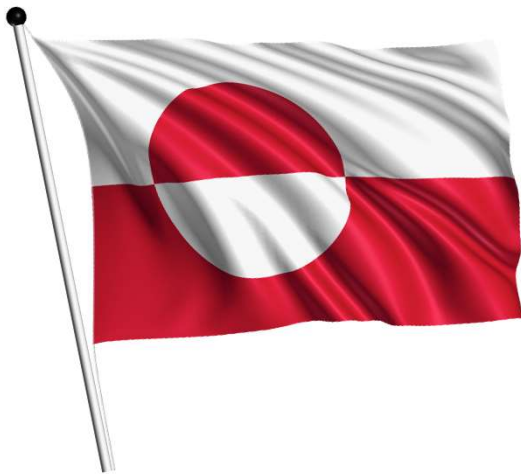


# Greenland Self-Government

**Ministry of Industry, Energy and Research: Jess Svane**

**Greenland Parliament (Greenlandic: Inatsisartut)**

- 31 member, including 1 chairperson.
- Passes acts of law which apply to all public authorities and private parties.





# Nuussuaq Greenland

To Be Opened for Exploration In  
July 2019

Ministry of Industry, Energy and  
Research

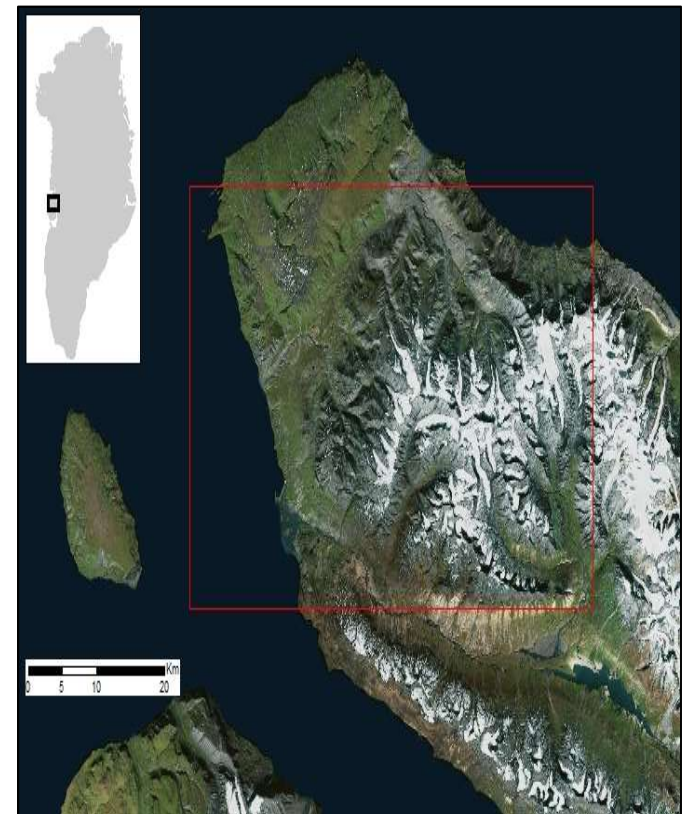


# Disko Nuussuaq open door 2019

Onshore areas of Disko and the Nuussuaq Peninsula

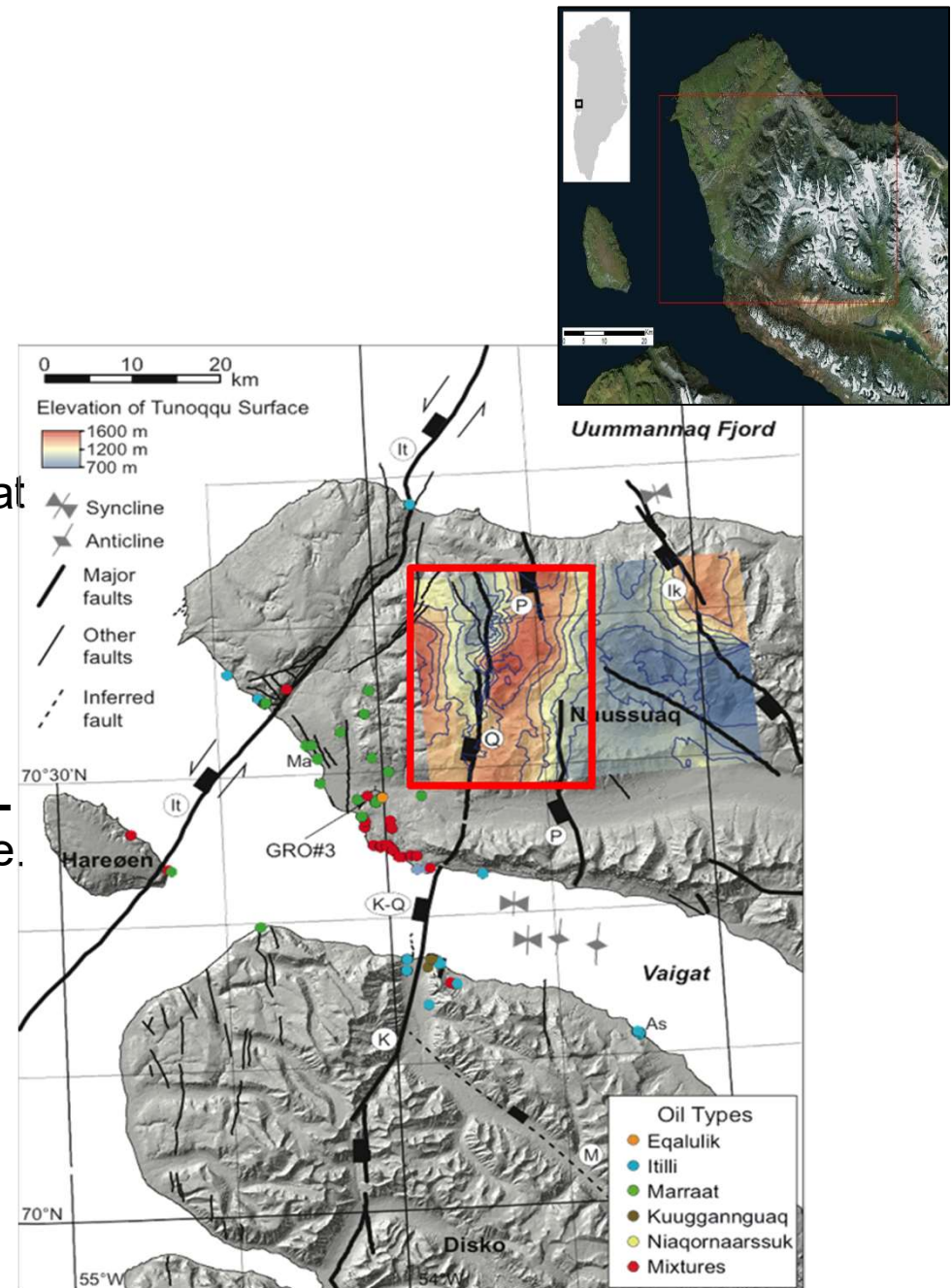
Opens for applications:

- 1<sup>st</sup> of July 2019
- First come - First served



# Nuussuaq Opportunity

- The Nuussuaq peninsula is known for **abundant oil seeps**.
- **New structural lead (Q1)** with great potential has been mapped by the Geological Survey of Denmark and Greenland (GEUS).
- Unrisked OIIP of up to **950 MMBBL** (GLJ Petroleum) in the Q1 structure.
- The geology on Nuussuaq has the potential to contain **other oil structures**.





# Nuussuaq Basin

## Petroleum Potential



Petroleum

- Oil seeps onshore
- Oil & gas in sl.c wells
- 200 oil samples acquired
- 5 distinct oil types

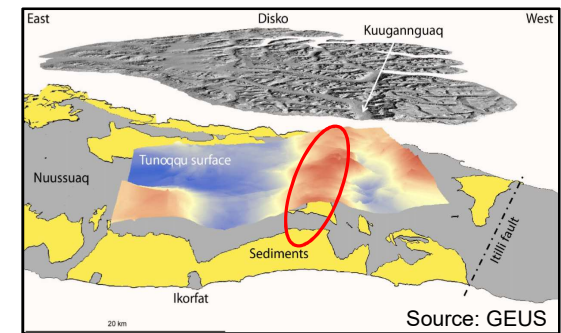


Reservoir

- Prodelt./deltaic/flu. sands
- Slope turbidites
- Incised valley complexes

Seal

- Marine mudstones
- Intra Fm. Mudstones
- Local mudstones



Structure

- Anticline structure
- Photogramm. Ident.
- Supra level mapping (Tunnoqu Mb)

<p><b>Onshore observations, slimcores, mapping:</b></p> <p>5 oil types*</p> <ul style="list-style-type: none"> <li>-Itilli oil, type II</li> <li>-Marrat oil, type III</li> <li>-3 more local oil types, less sign. (Bojesen-Kofoed et al, 1999)</li> </ul>	<ul style="list-style-type: none"> <li>-Atane Fm</li> <li>-Itilli Fm.</li> <li>-Qikavsak Fm</li> </ul>	<ul style="list-style-type: none"> <li>-Kangilia Fm.</li> <li>-Atane Fm. (Intra)</li> <li>-Maligat Fm (Volc. Series)</li> <li>-Eqalulik Fm (local)</li> </ul>	<ul style="list-style-type: none"> <li>-Seismics needed to confirm mapped structure</li> <li>-</li> </ul>
---	--	---	---

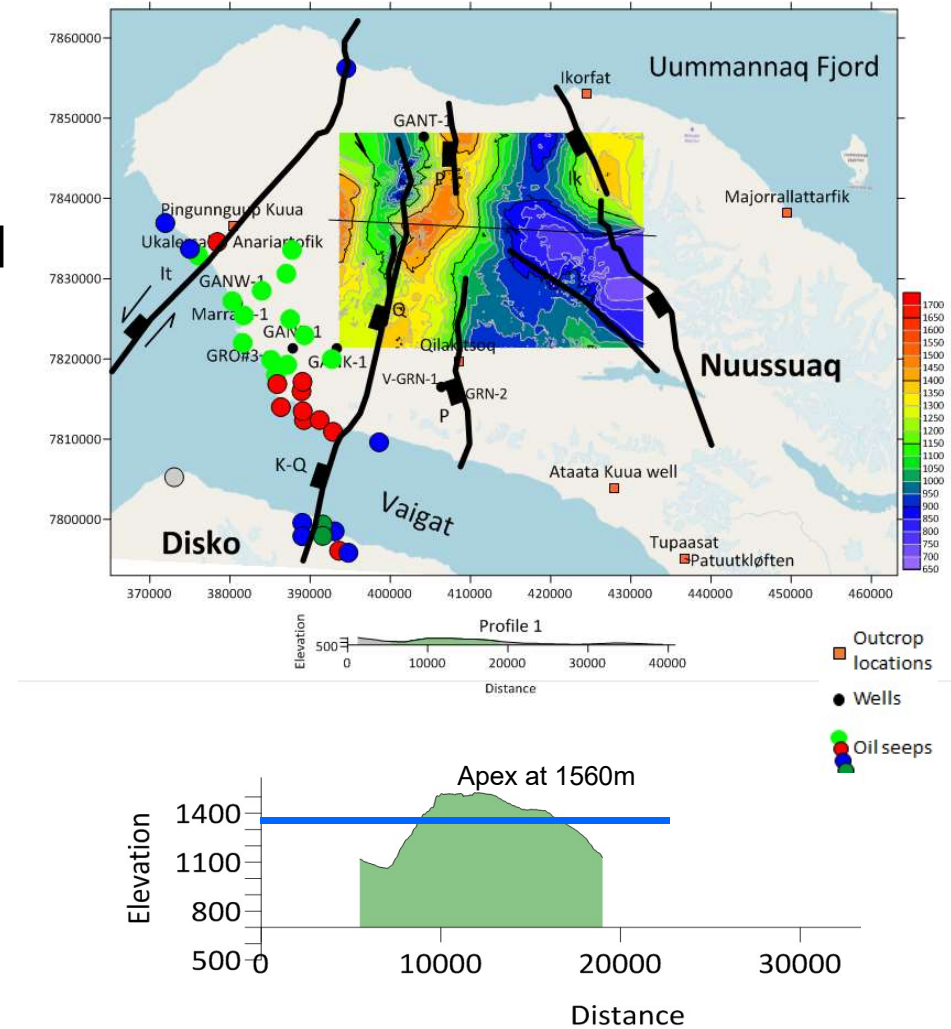
\*Geochem. analyses (GEUS) have identified 5 oil types



# Nuussuaq

## Significant Potential

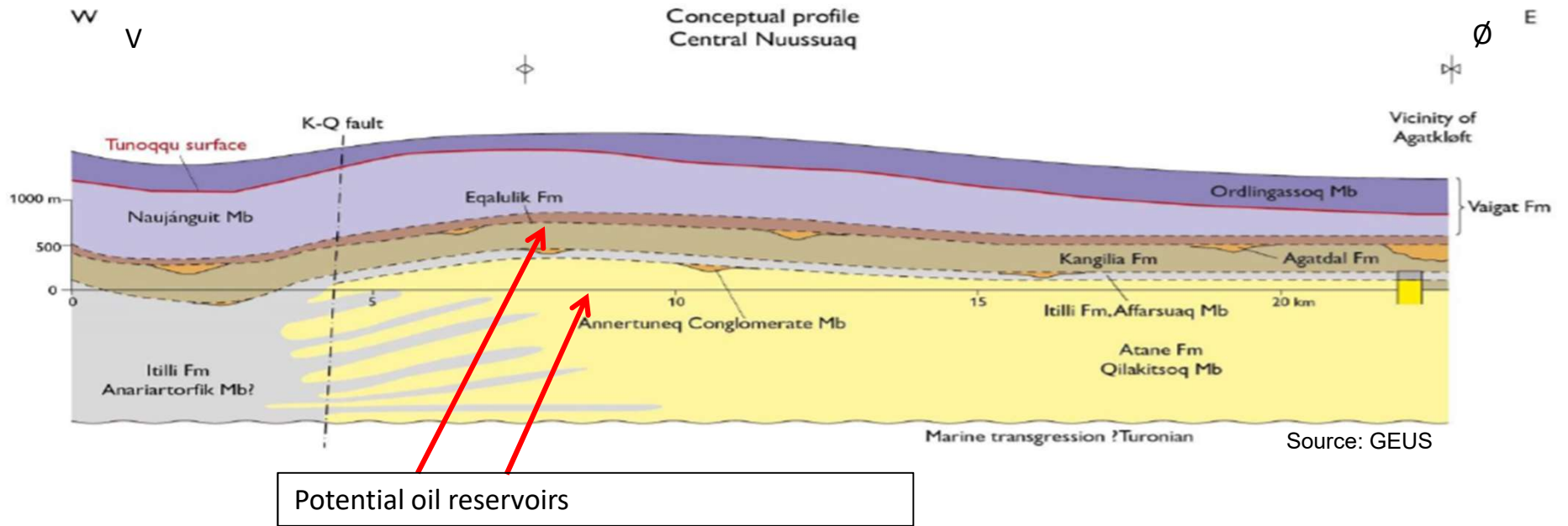
- Anticline of 250km<sup>2</sup> mapped out by photogrammetry on Nuussuaq
- Domal elongated structure in central part of anticline identified with closure of approximately 60km<sup>2</sup>
- Amplitude of structure 180m



10 X vertical exaggeration



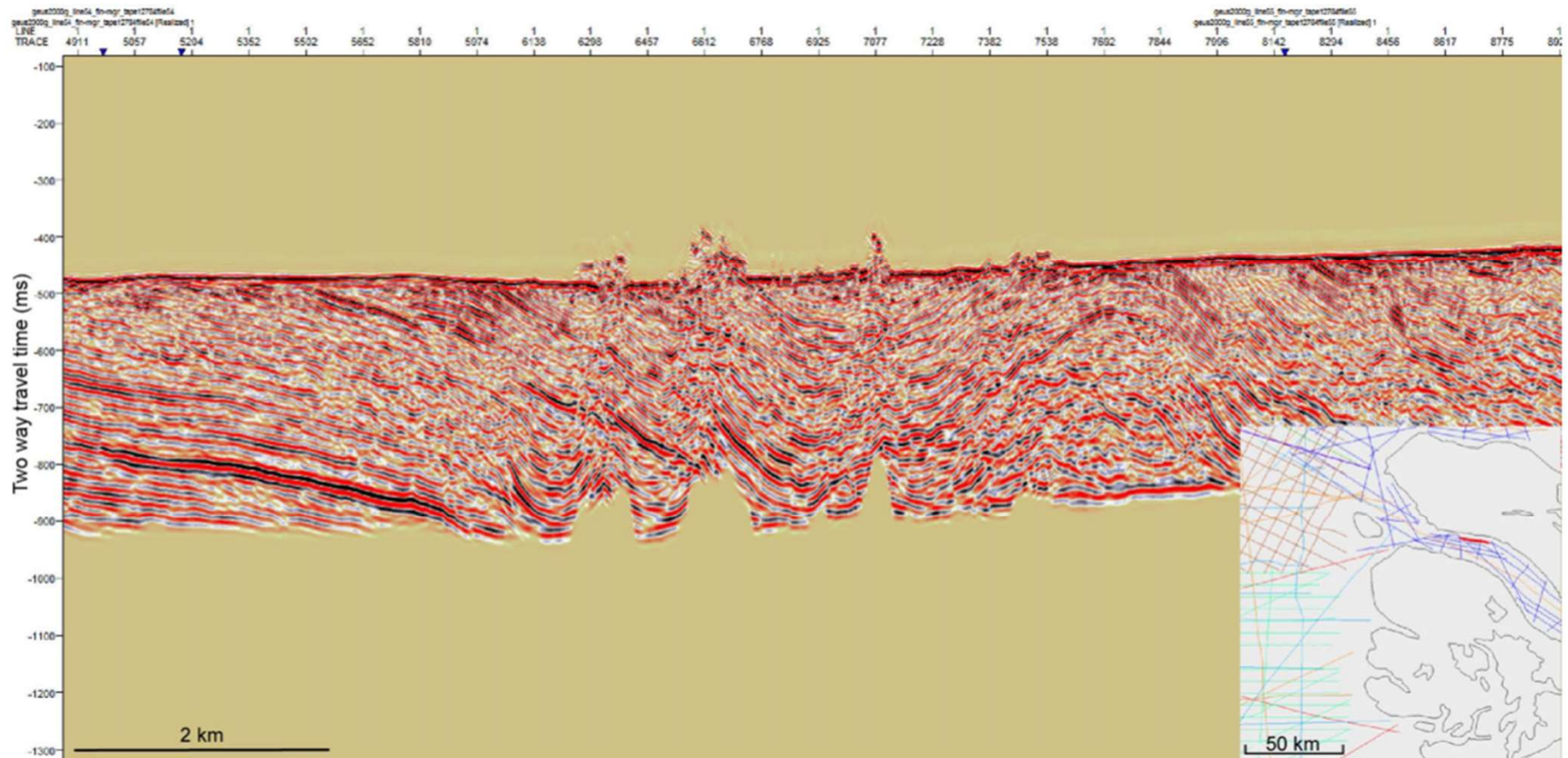
# Conceptual profile - Nuussuaq





# Offshore structure south of Nuussuaq

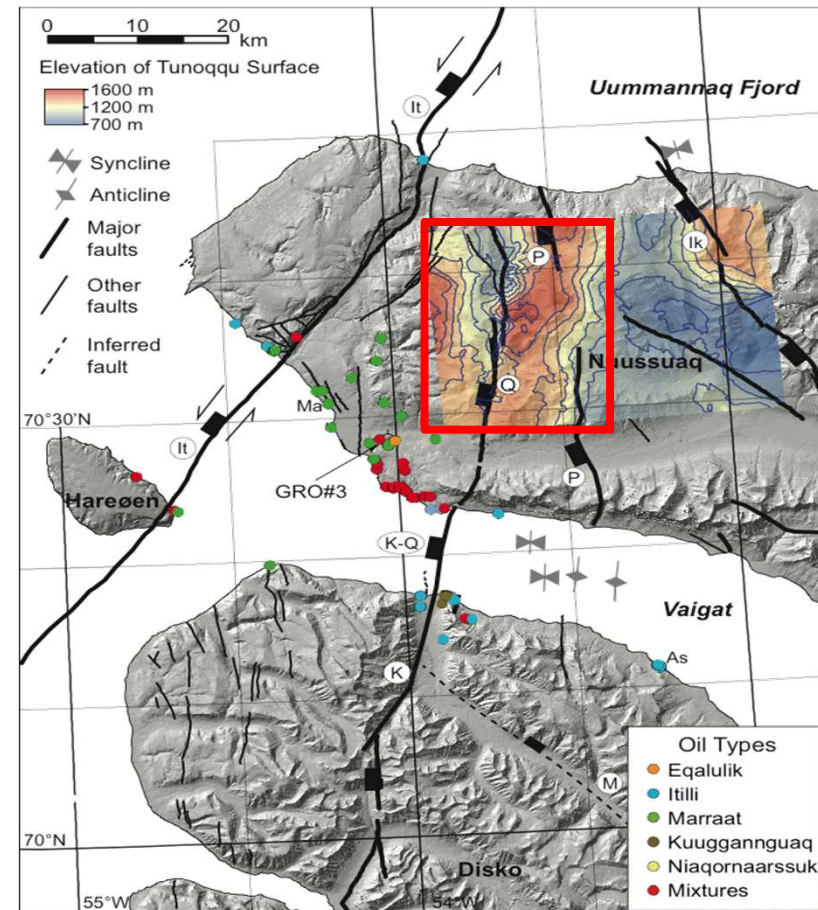
- Seismic reflection data from Vaigat showing folded Cretaceous sediments
- Red Line on map inset outlines location of profile





# Nuussuaq licencing procedure opens July 1<sup>st</sup> 2019

- Exclusive licence covering the Nuussuaq peninsula, **with a mapped structure (Q1) and potentially other oil structures.**
- A pre-designed work programme.
- Favorable **fiscal terms.**
- **Small financial commitment** (possible to apply for just 1 share of 1.5 million USD).
- **Publicly funded FTG** in 2019.





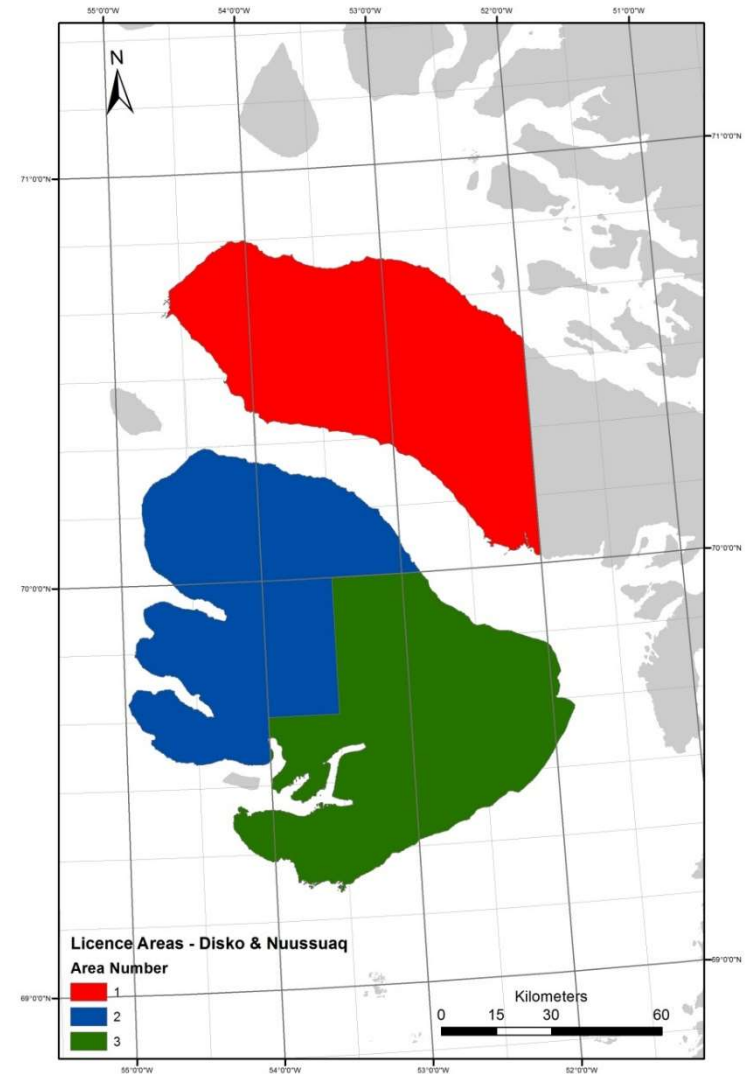
# Next Steps

1. Enhanced full tensor gravity survey (eFTG) on Nuussuaq during autumn of 2019 (financed by the Gov't of Greenland).
2. Granting of licence to participants (2019).
3. Seismic acquisition in 2020 (optional use of pre-designed work programme)
4. Stratigraphic drilling in 2021

# Nuussuaq Licence: Great upside potential on small investment.



- New structural lead covering 60 km<sup>2</sup> (Q1) with great potential has been mapped (2016).
- Other possible oil structures within the proposed licence area.
- Favorable fiscal terms
- Pre-designed minimum work programme (commitments).





## Learn More

- The Open Door Procedure will be announced on [www.businessingreenland.gl](http://www.businessingreenland.gl) and relevant industry publications.
- You may contact the Ministry of Industry, Energy and Research by writing to [isiin@nanoq.gl](mailto:isiin@nanoq.gl)



**Thank you**