

# Orphan Basin Insights

## AAPG 2018

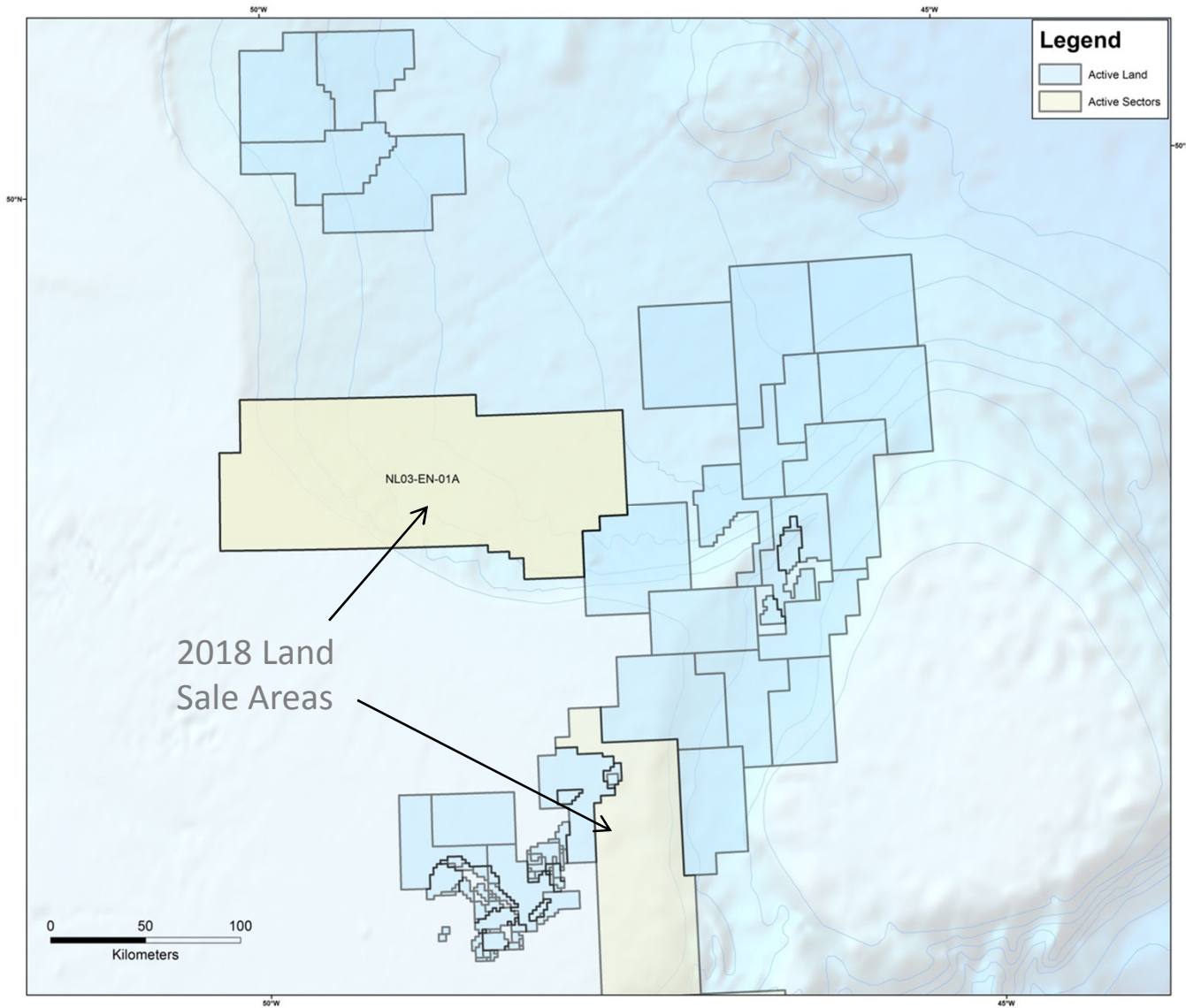
May 2018

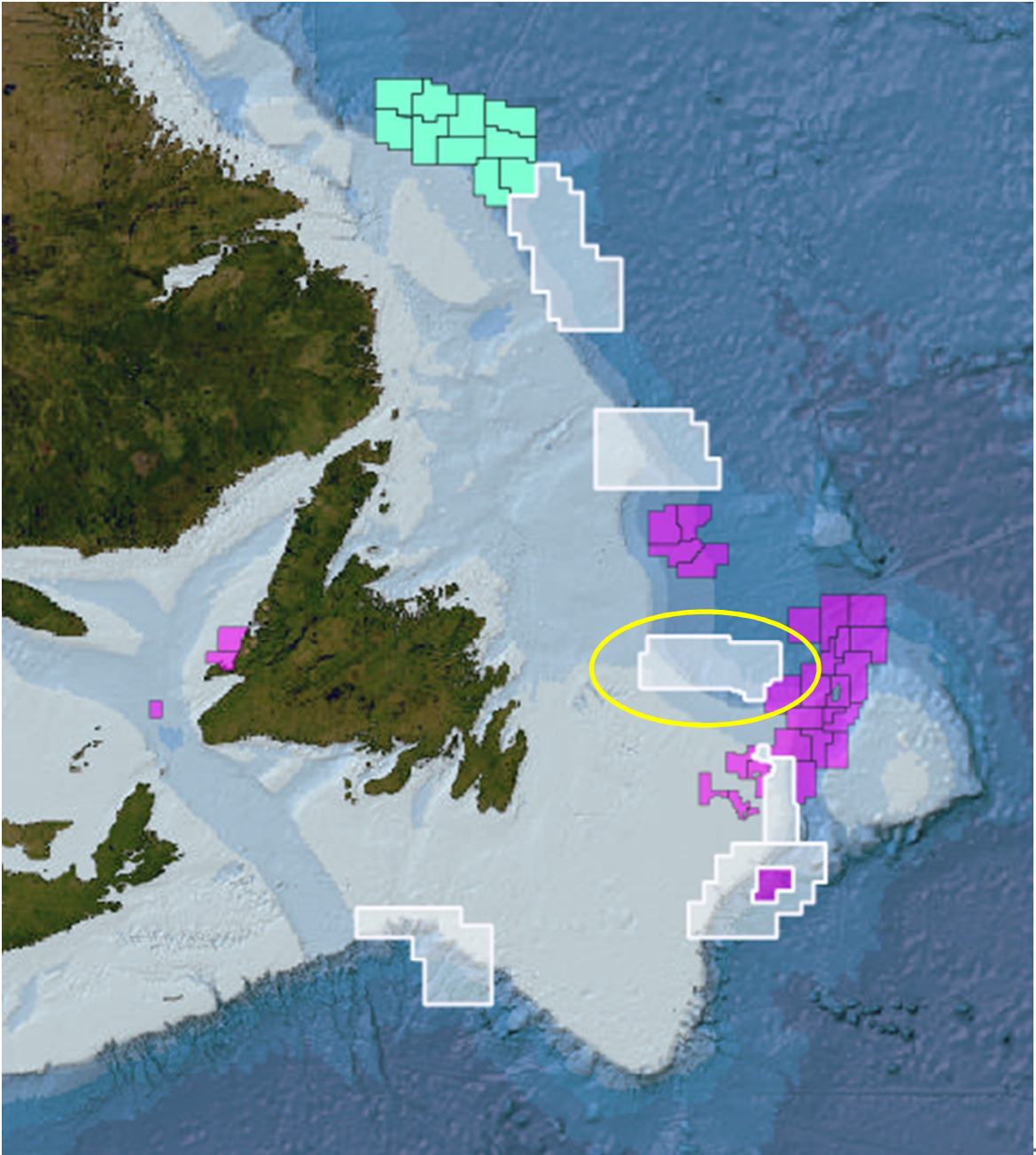


## NOTE

Seismic slides and structure maps presented at AAPG 2018 in this presentation have been removed from this distribution version

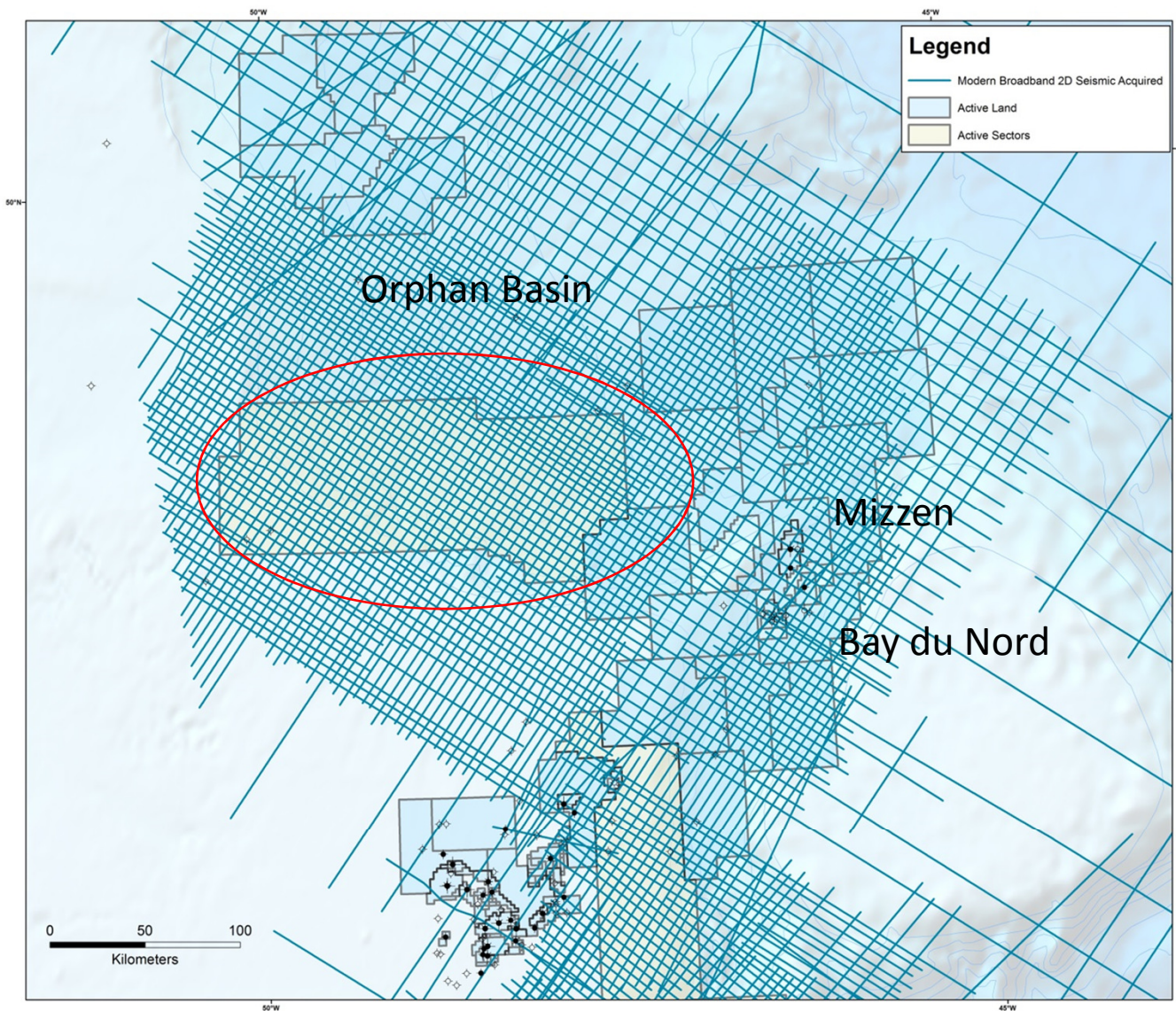
# Orphan Basin Insights





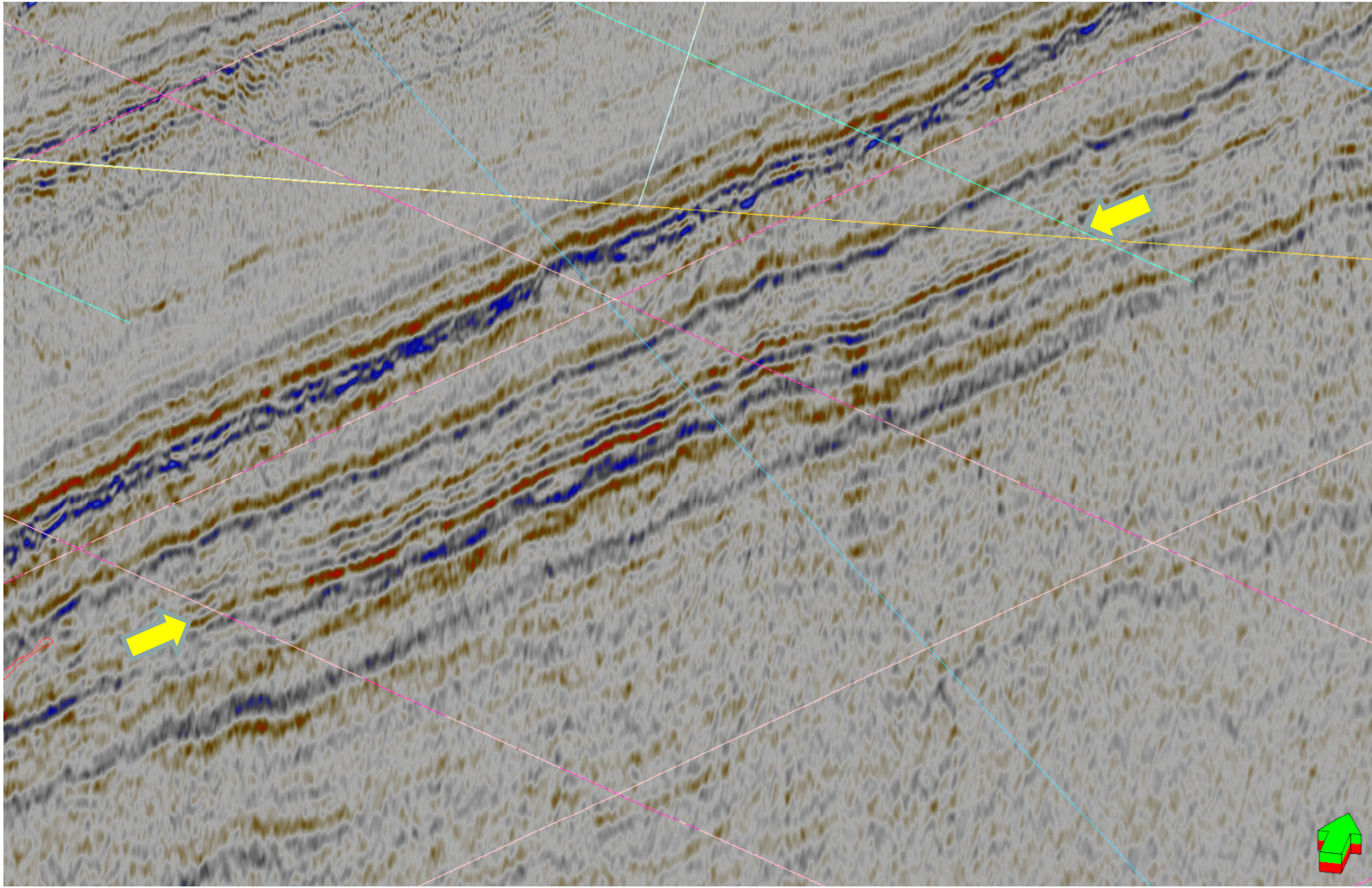
OIL AND GAS







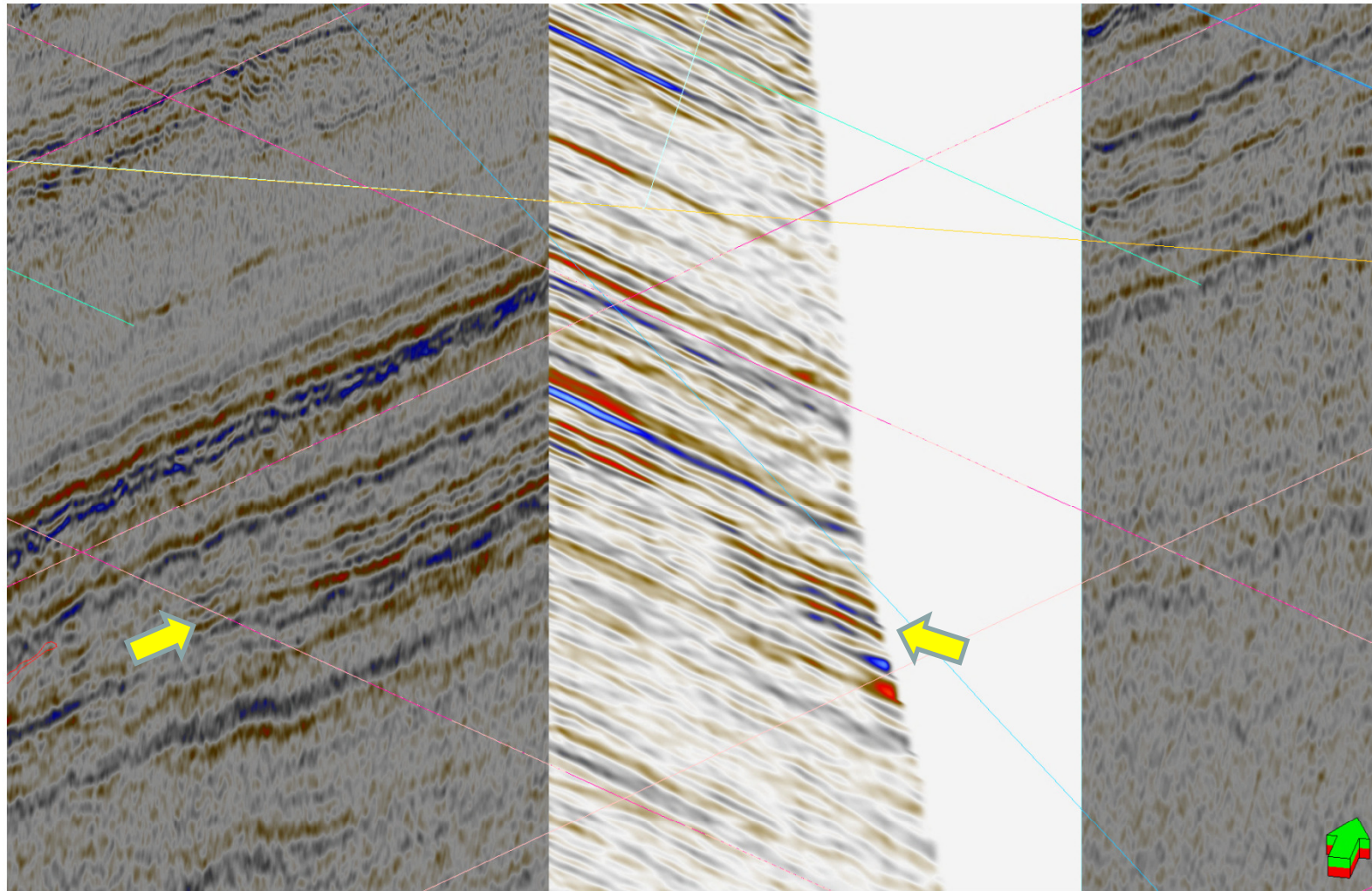
# Cretaceous Fan



Near Angle Far Angle

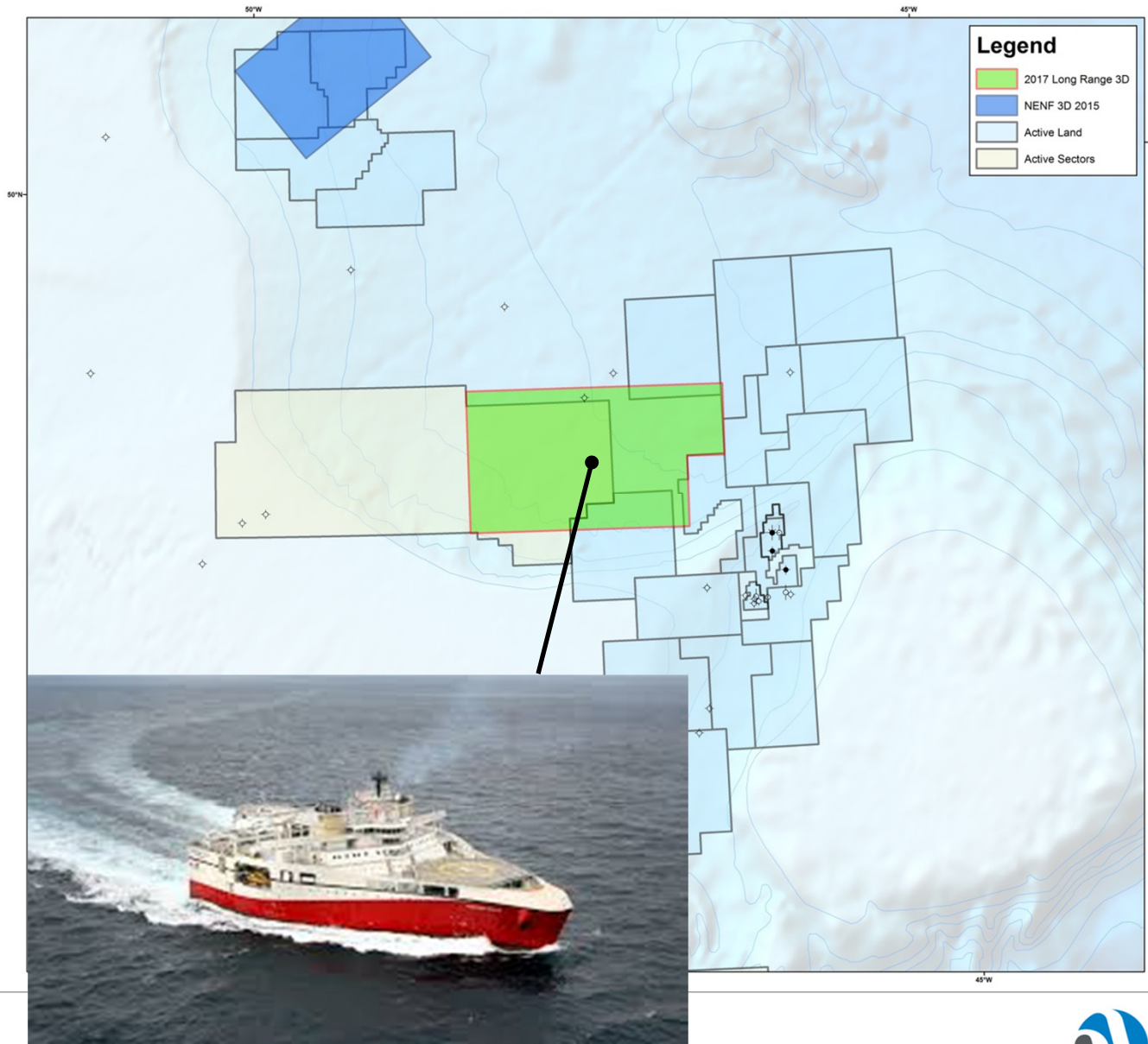


# Cretaceous Fan – CDP Gather



Near Angle Far Angle

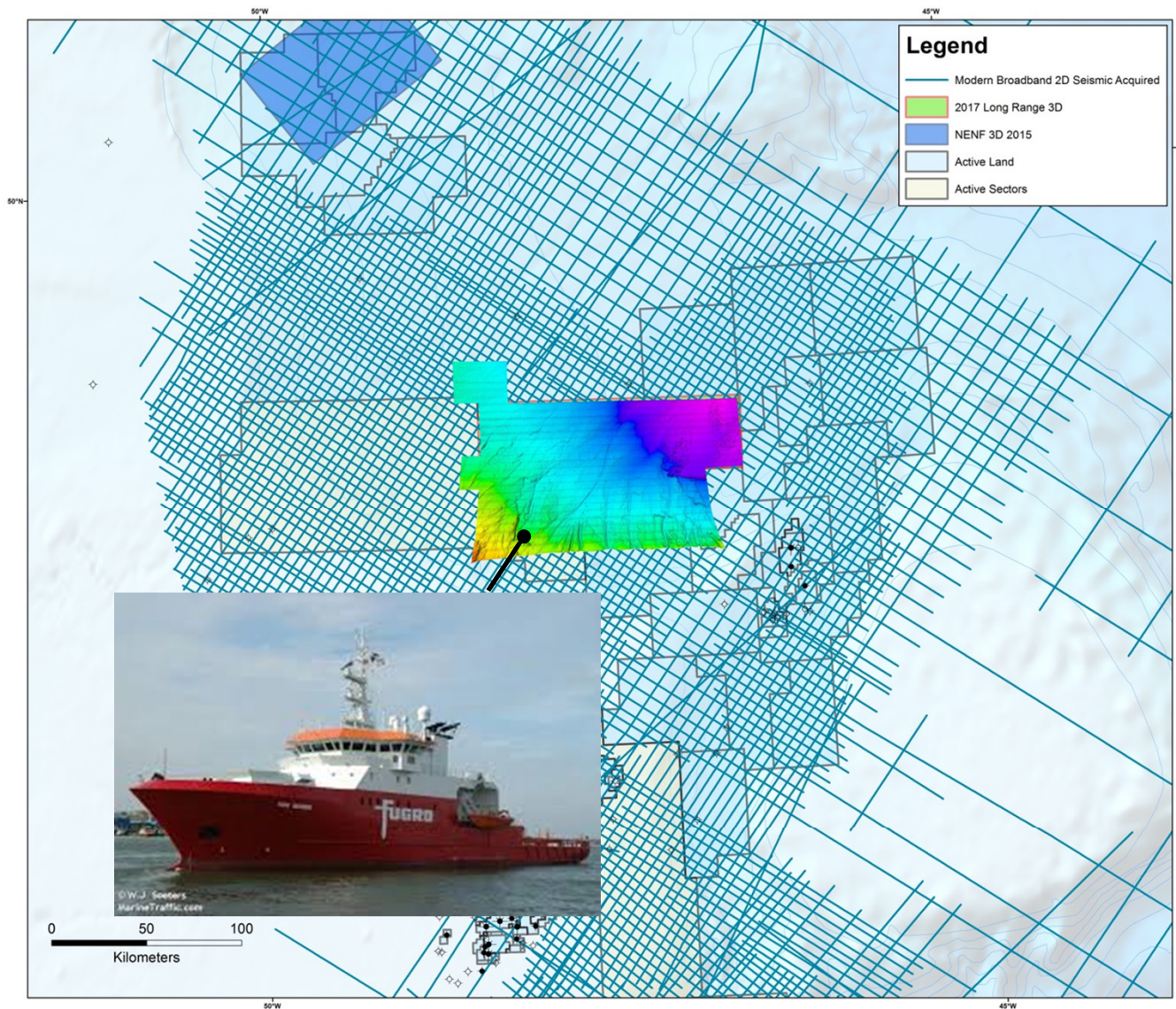
# Long Range 3D Seismic Survey



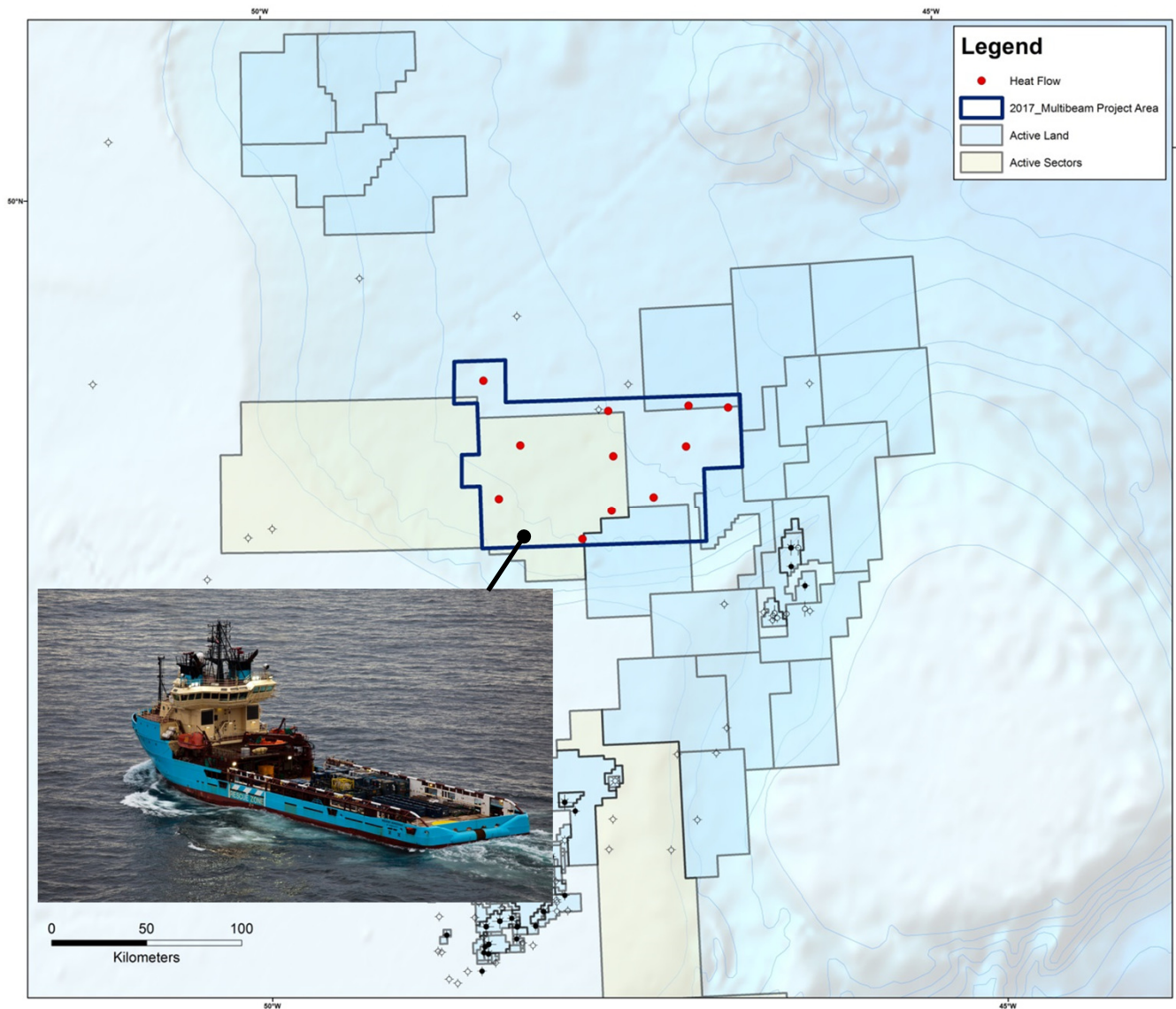
Titan Class  
16 Streamers



# Multibeam, Heatflow and Seabed Coring Program

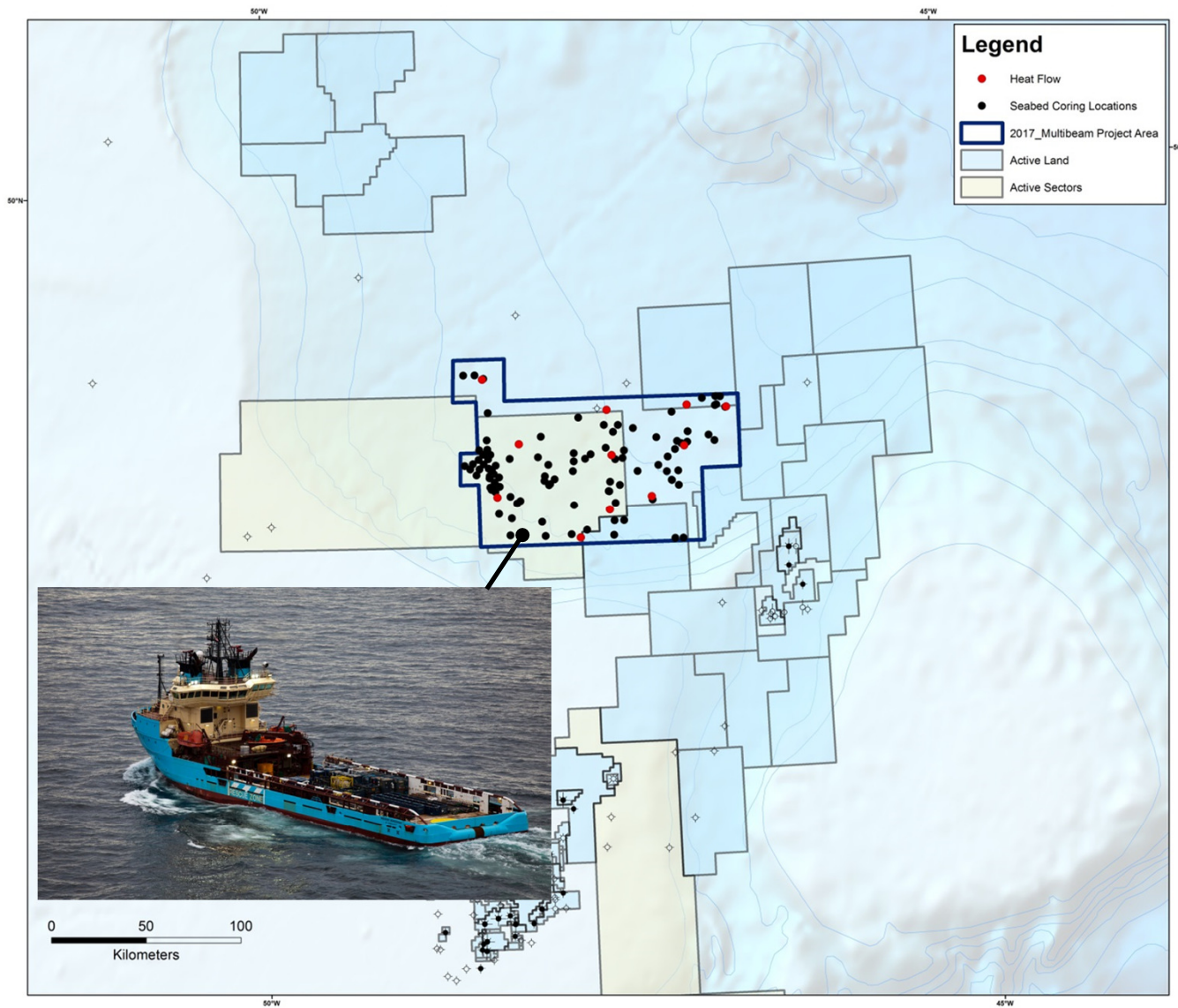


# Multibeam, Heatflow and Seabed Coring Program



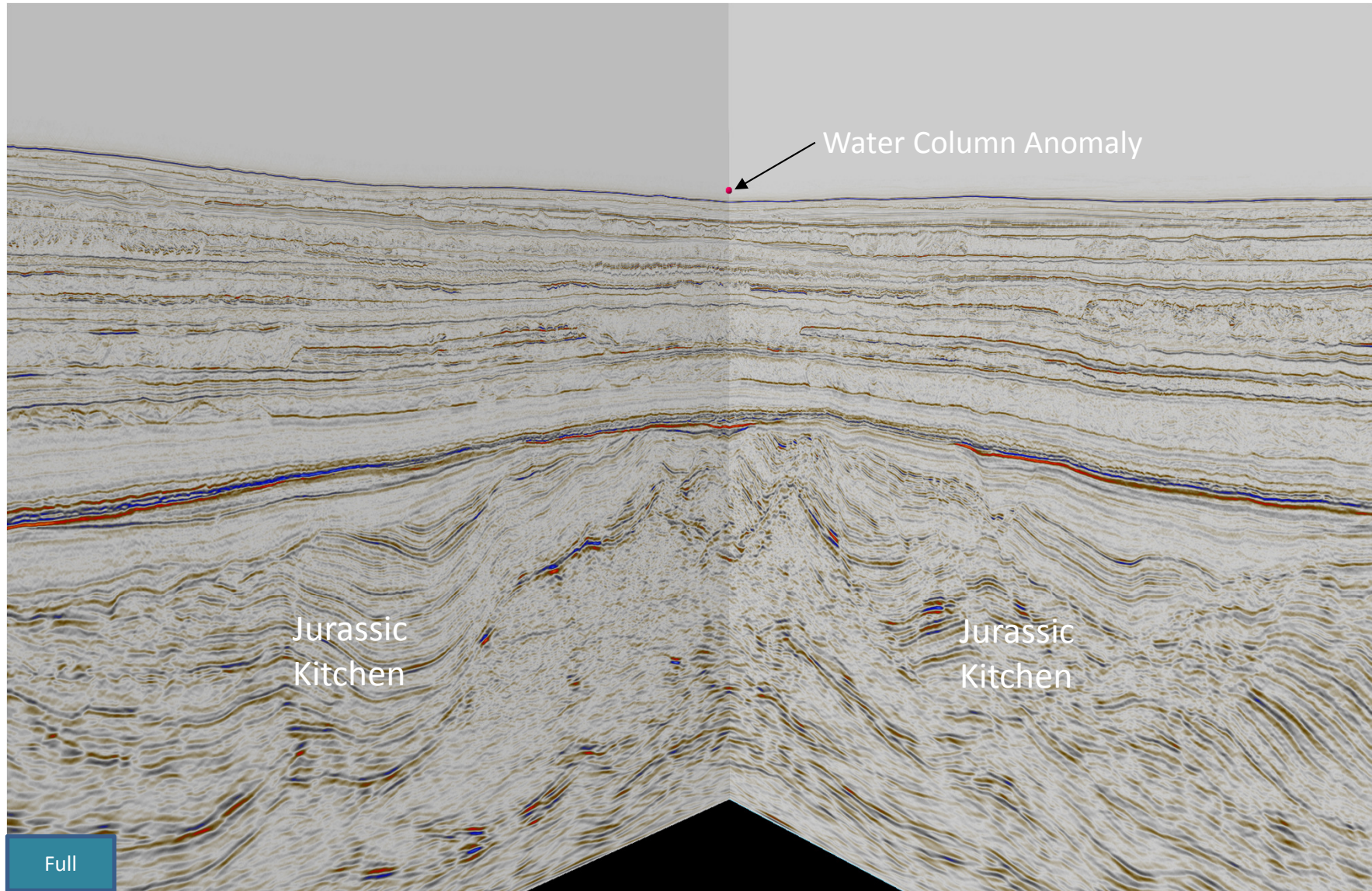


# Multibeam, Heatflow and Seabed Coring Program





# Water Column Anomaly





# Summary

- 2018 License Round in Orphan Basin contains amplitude supported leads of Mesozoic structures and fans, and Tertiary fans
- Modern broadband 2D and 3D seismic and seabed coring (multiclient surveys) defining plays and prospects

